

# UPDATE DYNAMICS GP IN EXCEL

TGP+ Manual

TitaniumGP® TGP+ User Manual Version 1.2



Contents

What is TGP+?..... 3

What is TGP+ SmarterList?..... 3

How can TGP+ help my business? ..... 4

TGP+ Installation Requirements..... 5

TGP+ Installation Instructions ..... 6

Troubleshooting..... 11

How to Use TGP+ ..... 16

## What is TGP+?

TGP+ is TitaniumGP's most powerful product ever.

It is an Excel integration that allows Dynamics GP users to work in their company's GP environment directly through Excel. If they know how to use Excel, they can use TGP+.

TGP+ tackles the most common issues that GP users face: speed, performance, and concurrent GP users.

Since TGP+ is opened and used exclusively in Excel, it doesn't use up a company's GP license. However, users will log in using their GP credentials, meaning that they will have the same security privileges in TGP+ that they have in Dynamics GP. Users can create journal entries or transactions and upload them directly through Excel, meaning that they'll avoid long GP loading times. They can open and edit SmartList through TGP+. If PivotTables are created using SmartList data, these can be automatically updated by refreshing both the SmartList and the impacted PivotTable.

TGP+ also has several other features that will make users' experiences with GP more convenient. The Reconcile and Verify features provide convenient ways of reconciling and verifying Data and MasterData. Users are also able to access our pre-made templates and use TGP Copy/Paste without even having to open GP.

TGP+ takes Dynamics GP and gives it the speed, convenience, and performance that Excel users see every day.

## What is TGP+ SmarterList?

TGP+ SmarterList is TGP+'s SmartList user interface. It is faster and easier to use than SmartList, with increased performance, a functional search bar, and the ability to use the data in SmarterList to create refreshable PivotTables and data analyses.

## How can TGP+ help my business?

TGP+ is an amazing tool for businesses because it's much faster than Dynamics GP will ever be. It's easier to use because it only requires that users have experience using Excel.

### **Reconcile data.**

Data reconciliation is a long and slow process. Luckily, TGP+ can do it for you with just a few clicks. TGP+'s reconciliation tool takes the data you want to reconcile and searches for it in your Excel sheet. The entries that aren't present get flagged so that you can quickly identify the differences in your lists.

### **Sign Journal Entries you upload to Dynamics GP.**

Dynamics GP doesn't support a signature functionality. Luckily, Excel does. TGP+ takes this Excel feature and makes it easy for users to create journal entries and transactions with a signature field. Once the user is done creating the entry, they can sign it before uploading. Once a document is signed, users are unable to make changes. If they wish to proceed with a change, the signature will become invalid.

### **Easily accessible templates for creating single entries and/or bulk-updating data.**

TGP+ users will automatically have access to a variety of templates. Located in the ribbon, there are templates for both single entries and transactions as well as templates for bulk-updating data. These templates will make using Excel to update Dynamics GP windows easier than ever, since updating data will only require users to fill in fields.

### **Analyze data using refreshable PivotTables.**

Excel's PivotTables are a powerful tool that can be used to analyze data. When TGP+'s SmarterList is used to create PivotTables and the data in SmarterList is updated (whether by you or another user), simply refresh both SmarterList and your PivotTable. The table and any associated graphs and graphics will automatically update to reflect the new data.

These are just some of the ways that TGP+ can be used to improve users' GP experiences. It's a powerful tool with the potential to extend GP's lifetime.

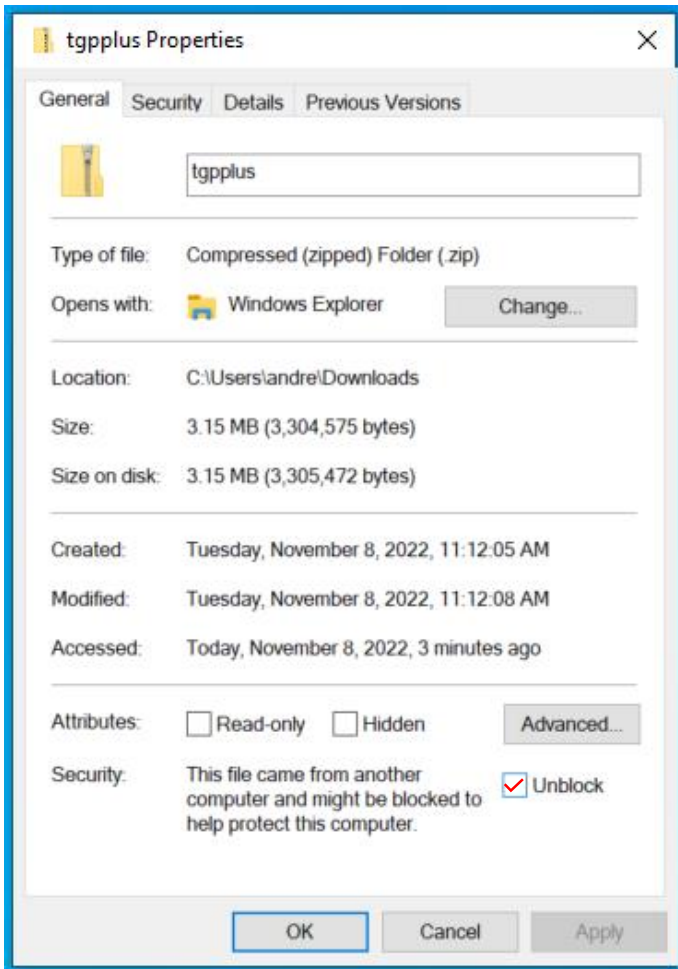
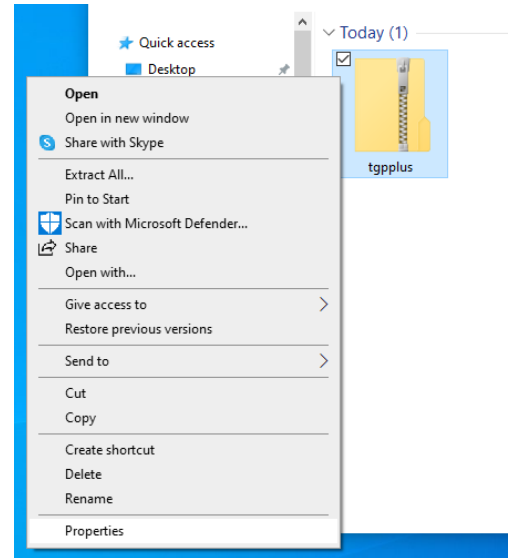
## TGP+ Installation Requirements

- The computer must have
  - ODBC connection to GP
  - Microsoft shared components
    - Note: Both get installed if GP is installed in the current workstation
- The user requires a valid Dynamics GP User account
- Excel Requirements:
  - Microsoft Office Professional 2016 or newer OR
  - Microsoft 365 apps subscription

# TGP+ Installation Instructions

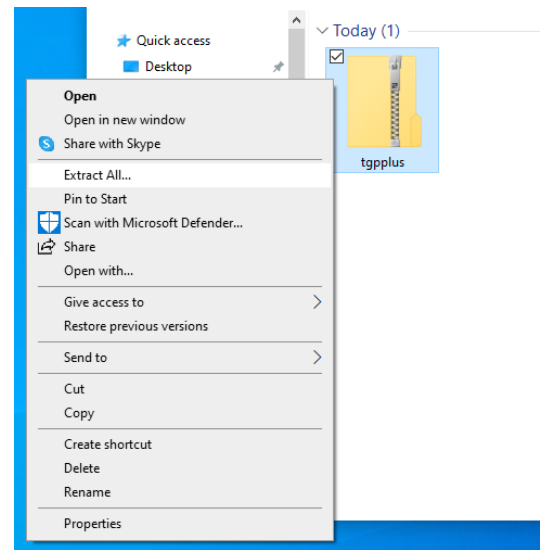
## Step 1

Start by downloading the TGP+ file. Once downloaded, click on **Properties**.



## Step 2

Go to **Security** and check the **“Unblock”** box. Now extract the files.



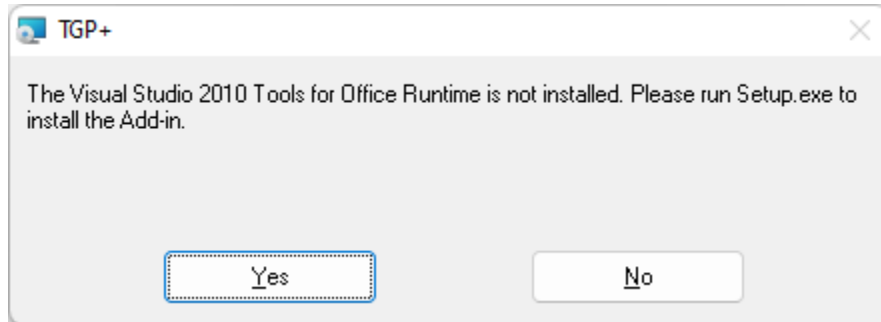
## Step 3

Once extracted, double-click the Setup file.

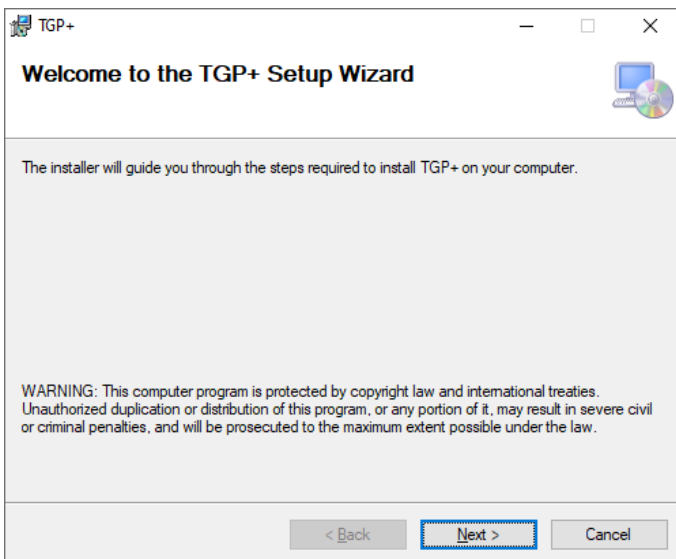
Name	Type	Size
setup	Application	867 KB
TGPPlusSetup	Windows Installer Pa...	3,427 KB

## Step 4

In some cases, depending on the version of Excel being run, users might see the following error window pop-up:



If this window pops up for you, go to **Step 15** on **Page 11** in the **Troubleshooting** section.



## Step 5

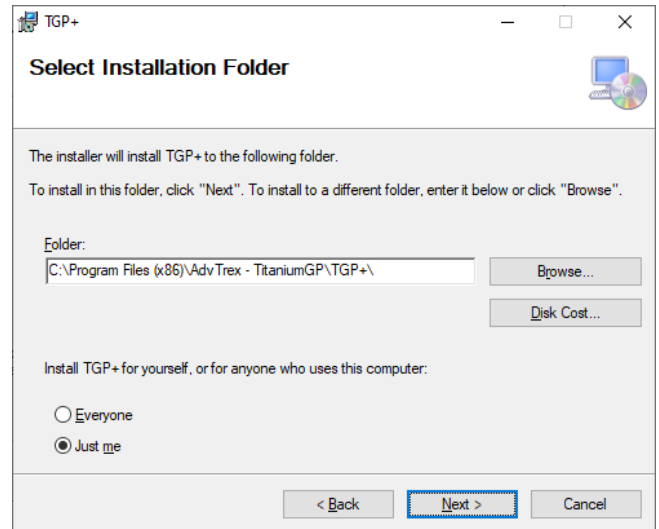
Launch the Setup Wizard.

Click "**Next**" on the Setup Wizard window.

### Step 6

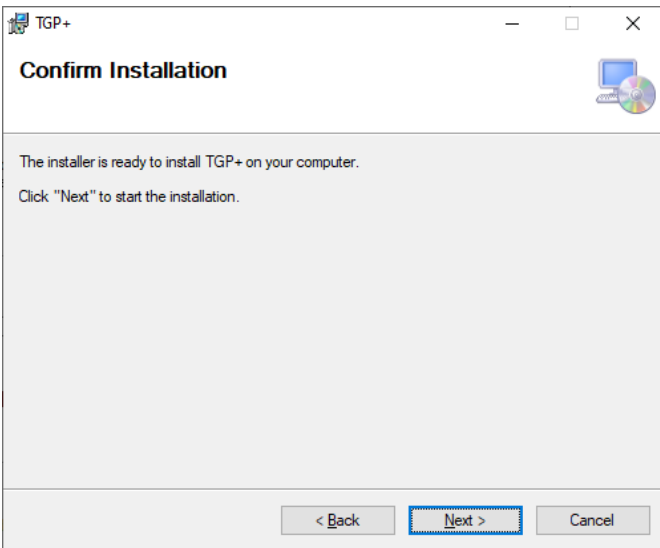
By default, TGP+ will be installed in [ C:\Program Files ]. To change the default folder where it will be installed, click “Browse” and change the folder.

Select whether you want TGP+ to be installed on your user or all users for the computer. Click “Next.”



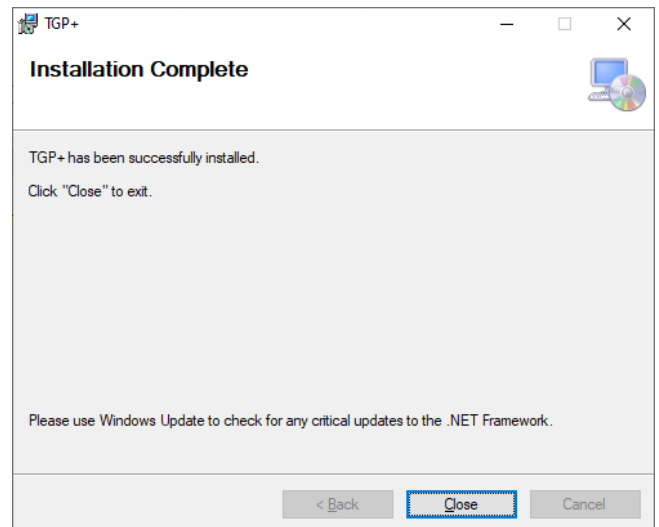
### Step 7

Click “Next” to confirm the installation.



### Step 8

Click “Close” to close the Setup Wizard.

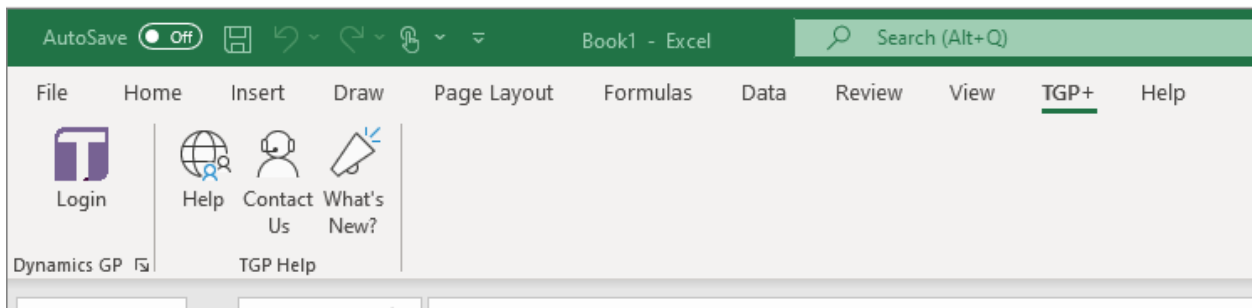


**Step 9**

Restart Excel and open a blank worksheet.

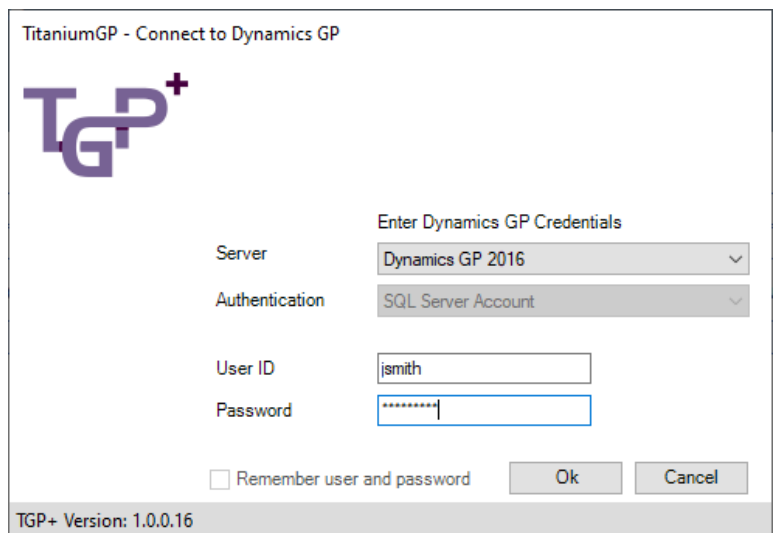
If the TGP+ tab is in the ribbon, continue to **Step 10**.

If it is **NOT** available in the ribbon, continue to **Step 20** on **Page 13** in the **Troubleshooting** section.



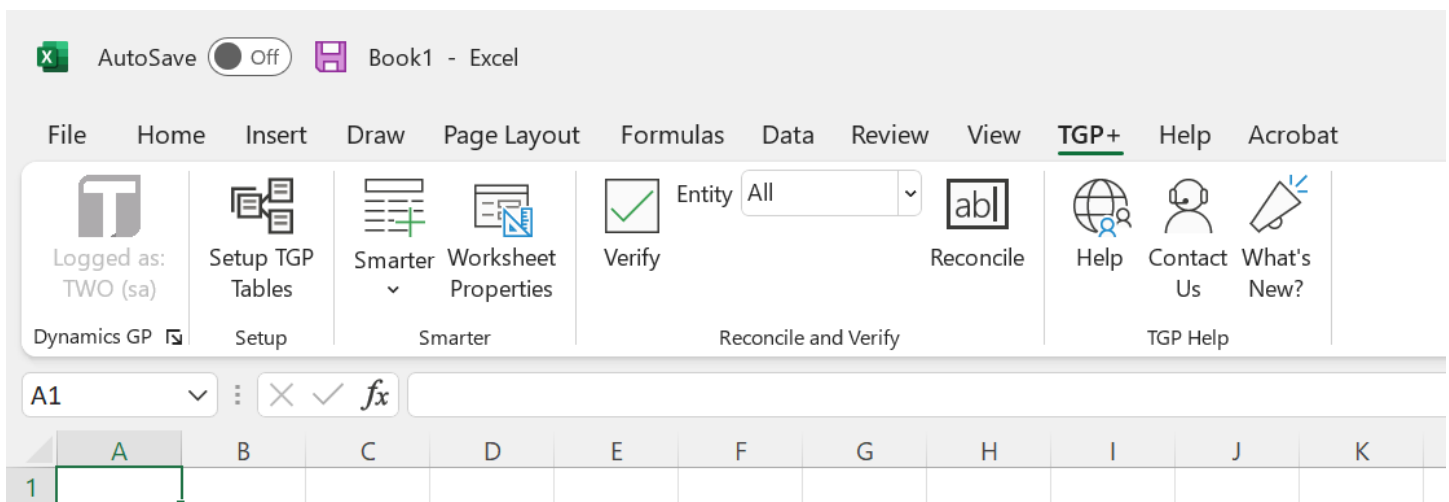
**Step 10**

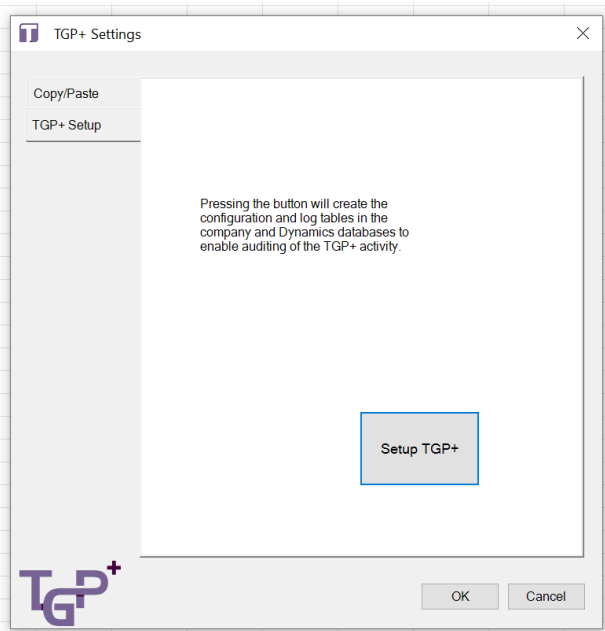
Login using your Dynamics GP credentials and press “OK.”



**Step 11**

To set up Copy/Paste, click on “**Setup TGP Tables**” in the ribbon.



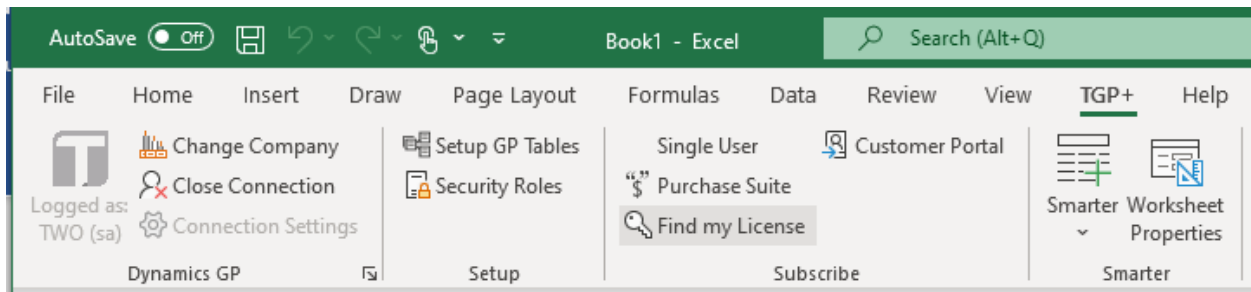


### Step 12

A window will pop up. Click on “**Setup TGP+**” and then click on “**OK**”.

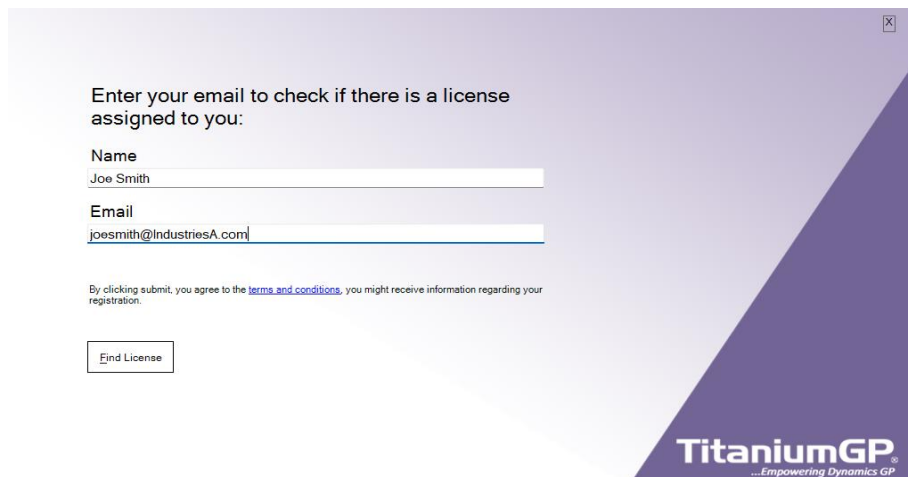
### Step 13

Your TGP+ ribbon will activate with more options. If you would like to subscribe for a single user, purchase the Unlimited User Suite, or find a license from your company, you can do this in the “**Subscribe**” tab of the ribbon.



### Step 14

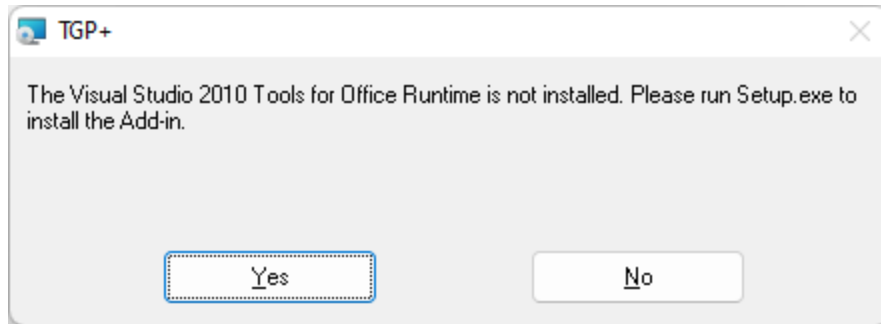
If your company has the Unlimited User Suite, select “Find my License.” The following window will appear. Enter your name and email to search for a license and activate it. Once you have an active license, you are ready to start using TGP+!



## Troubleshooting

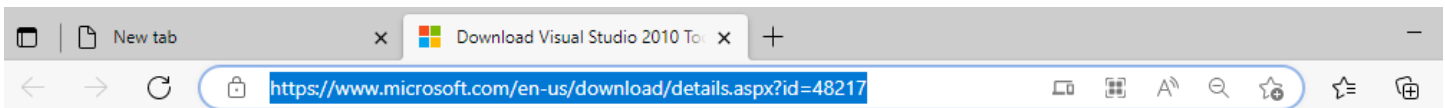
### Step 15

If you saw this error message pop-up when beginning the installation process, click on “Yes”.

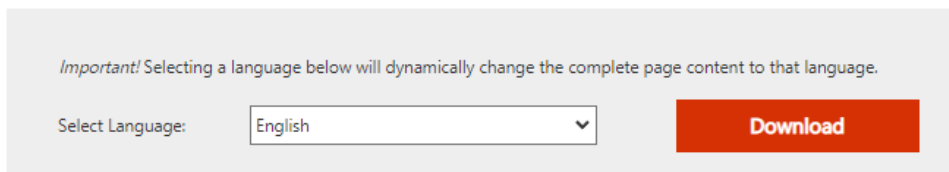


### Step 16

Download the “**Visual Studio 2010 Tools for Office Runtime.**” This will **not** change the version of Excel or GP you have installed on your computer. It will simply add the missing Excel components that will allow it to be compatible with TGP+.



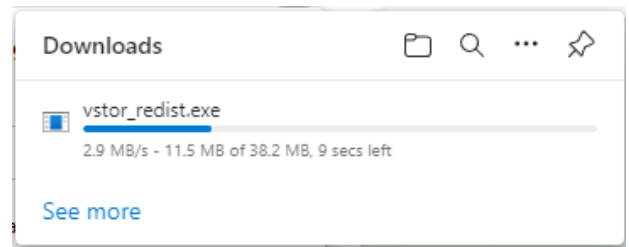
#### Visual Studio 2010 Tools for Office Runtime



This download installs the Visual Studio 2010 Tools for Office Runtime, which is required to run Microsoft Office based solutions built using Microsoft Visual Studio 2010, 2012, 2013 and 2015.

### Step 17

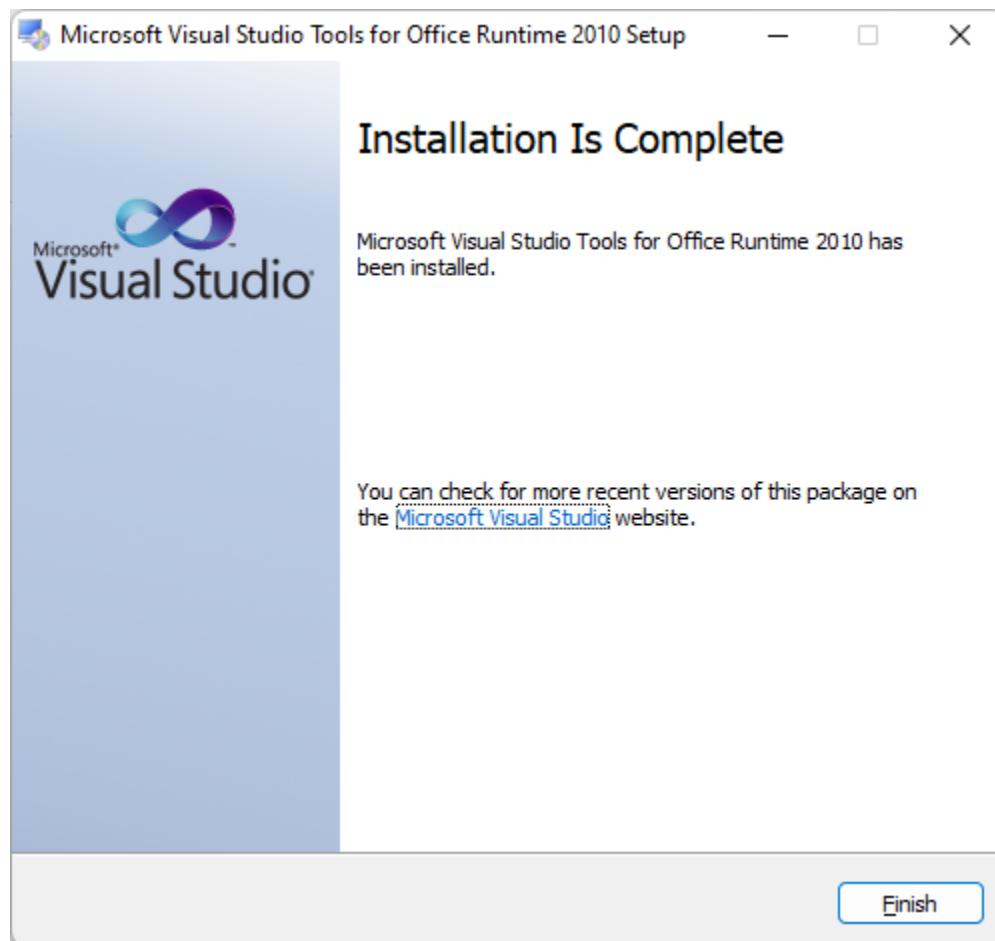
Install the program on your computer.



### Step 18

Once installed, you will receive an “**Installation is Complete**” message.

Restart Excel. Depending on the version you are running, you may also need to restart your computer. If this is the case, you will receive a message informing you to do so.

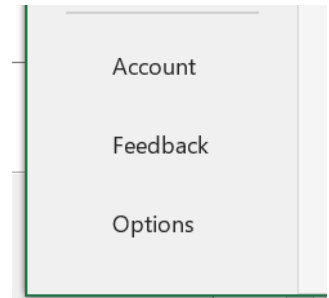


### Step 19

You may now continue to **Step 4** on **Page 7**.

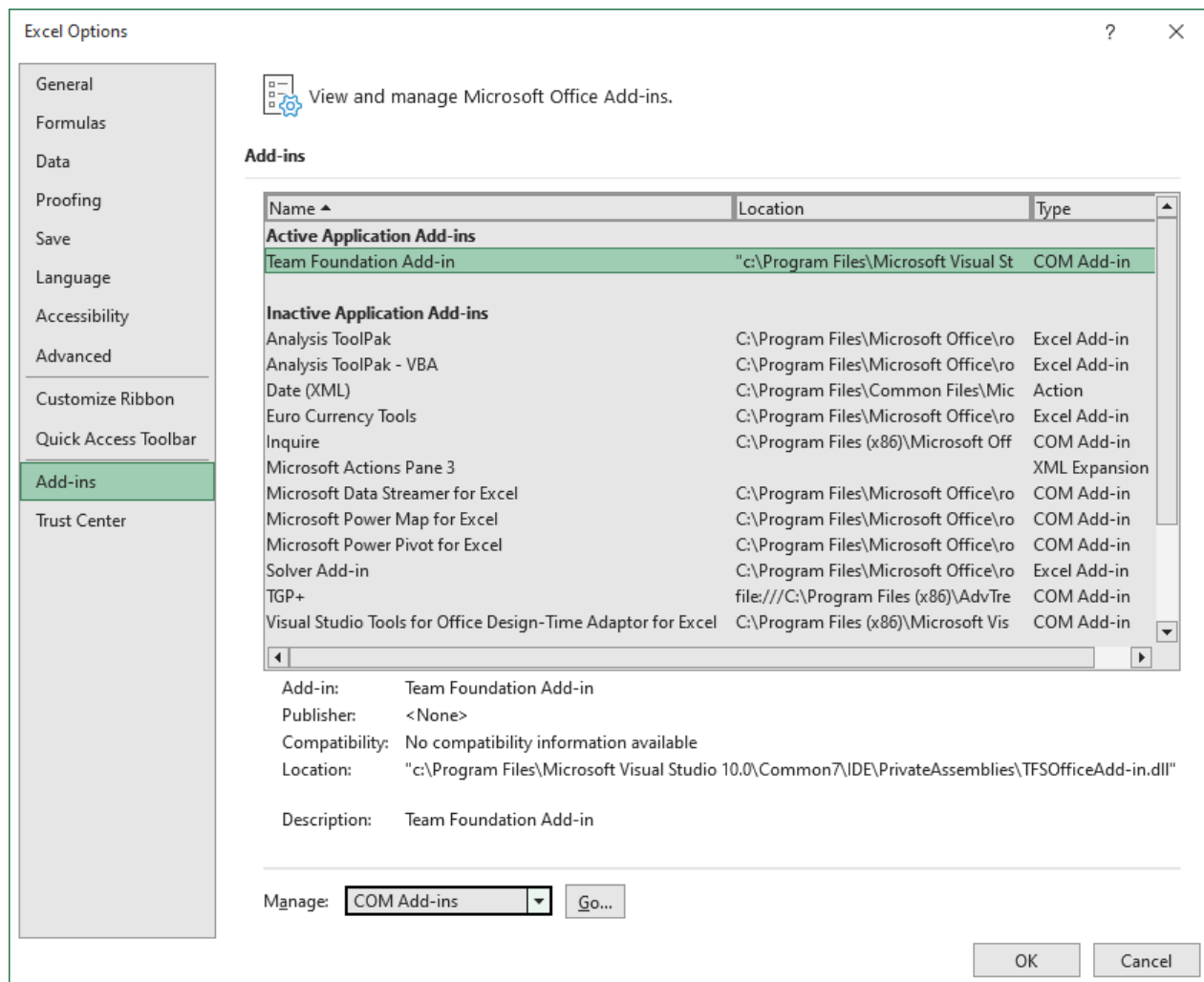
## Step 20

Open Excel. In the bottom left corner of the window, click **“Options.”**  
This will open the Excel Options window.



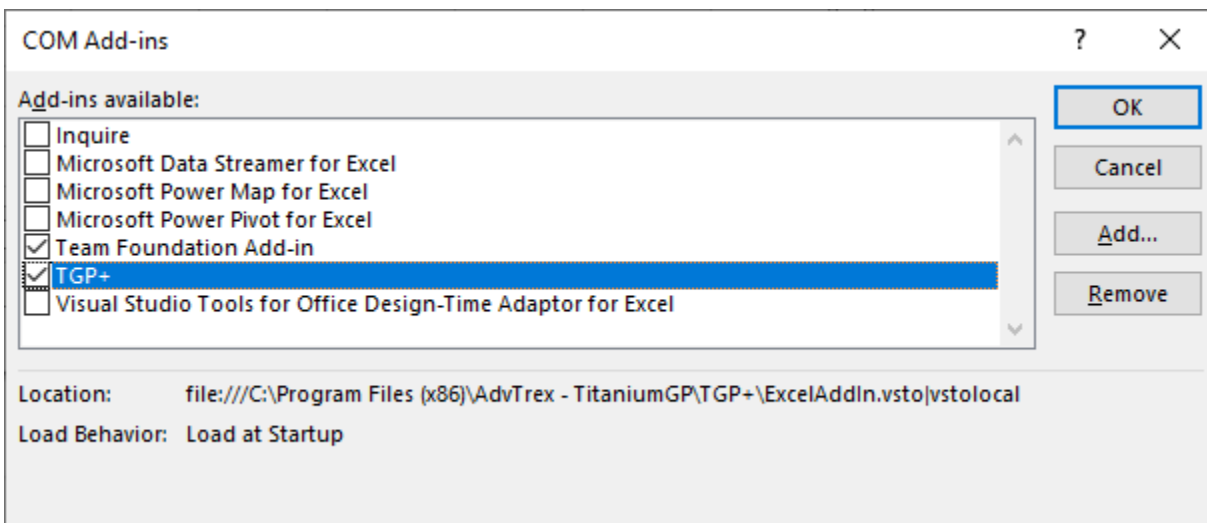
## Step 21

On the left, click on the **“Add-ins”** section. At the bottom of the window, Select **Manage → COM Add-ins**. Click **“Go...”**



## Step 22

The **COM Add-ins** window will pop up. Make sure that TGP+ is checked and press “**OK.**”



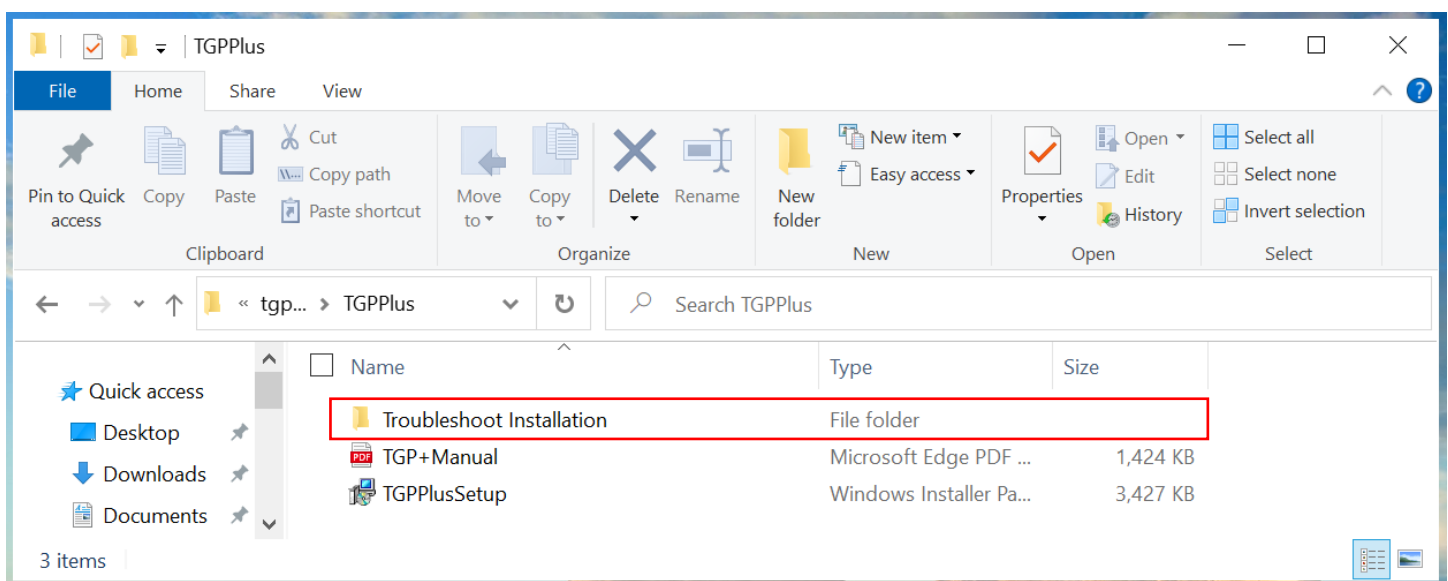
## Step 23

Restart Excel and open a blank worksheet. If the TGP+ tab is in the ribbon, go back to **Step 9** on **Page 9** to finish the installation process.

If it is **NOT** available in the ribbon, continue to **Step 24.**

## Step 24

Open the “**TGP+ Registry Key**”, located inside the “**Troubleshoot Installation**” folder.



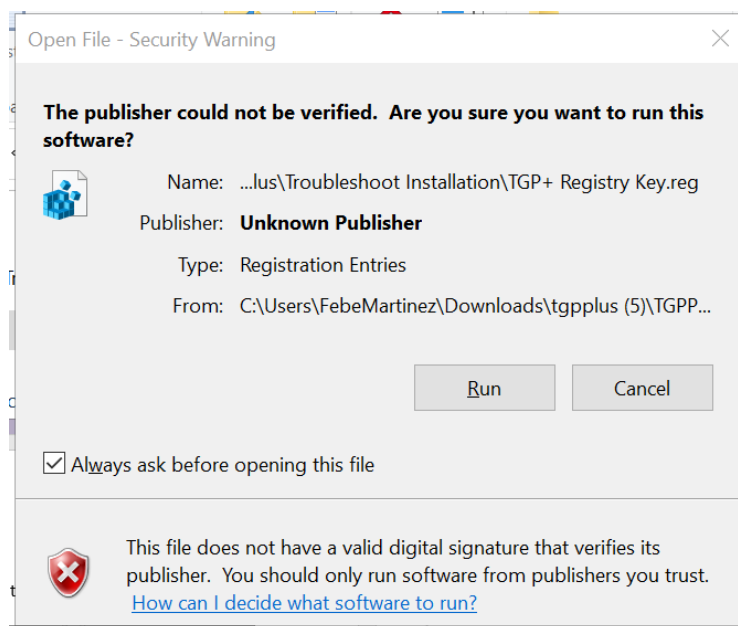
## Step 25

The purpose of this file is to create the following entry, indicating to Excel to show the TGP+ ribbon.

Windows Registry Editor Version 5.00

```
[HKEY_CURRENT_USER\SOFTWARE\Microsoft\Office\Excel\Addins\TGP+]
"Manifest"="file:///C:\\Program Files (x86)\\AdvTrex - TitaniumGP\\TGP+\\TGP+.vsto|vsto|local"
"Description"="TGP+"
"FriendlyName"="TGP+"
"LoadBehavior"=dword:00000003
```

You will see a **Security Warning** window pop up. Click on **“Run”**. This file is completely safe.



## Step 26

Restart Excel and open a blank worksheet.

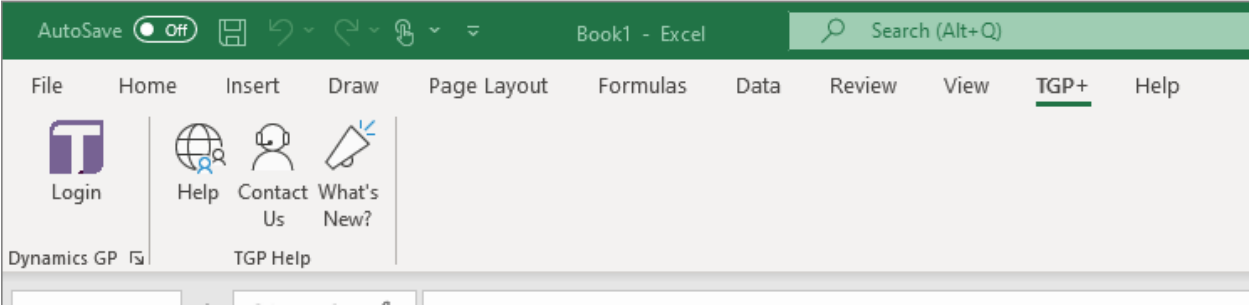
## Step 27

Go to the new TGP+ ribbon. Click the **“Login”** button. Go back to **Step 9** on **Page 9** to finish the installation process.

# How to Use TGP+

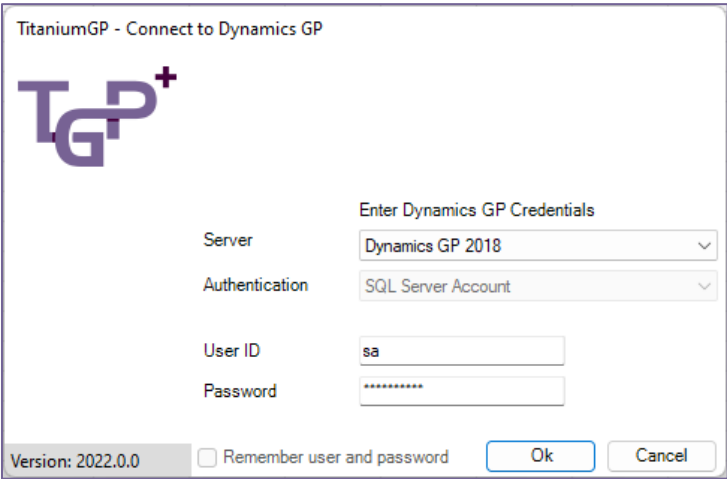
## Step 1

After installing TGP+, start by opening Excel. Once Excel is open, click on the tab that says TGP+. You'll see a few fields in your ribbon. These are all things you can do in TGP+ even when offline.



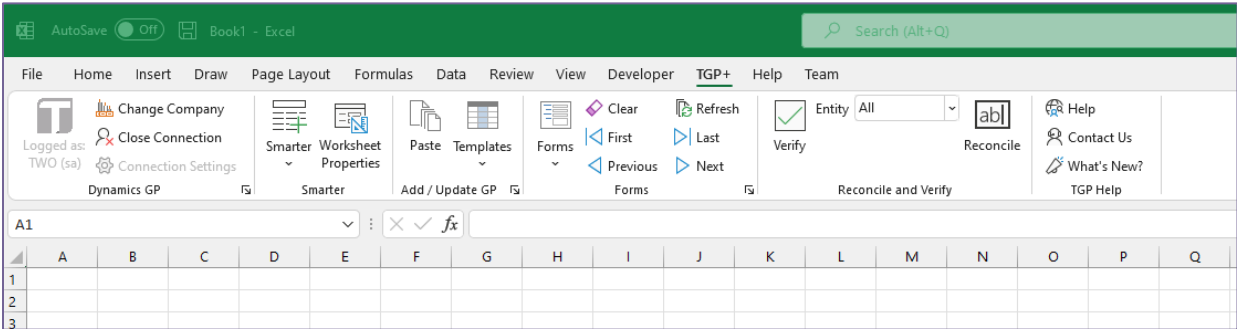
## Step 2

On the far-left side of the ribbon you will see a GP login window. Log into GP using your GP credentials. Although TGP+ can be used when not logged in, the functionality is extremely limited to protect user security.



## Step 3

Once you're logged in, you'll see the ribbon populate with additional online functionality.

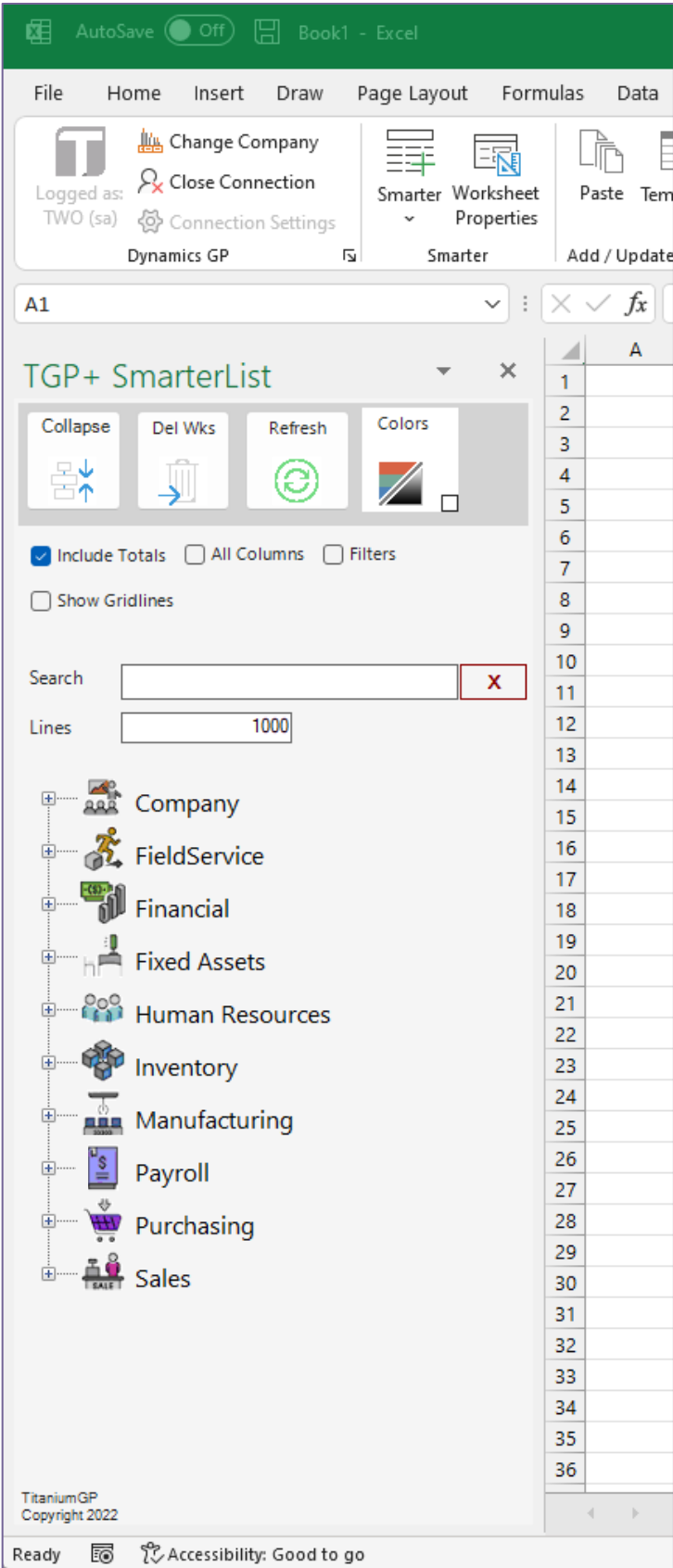


Step 4

Now let's look at some of TGP+'s features.

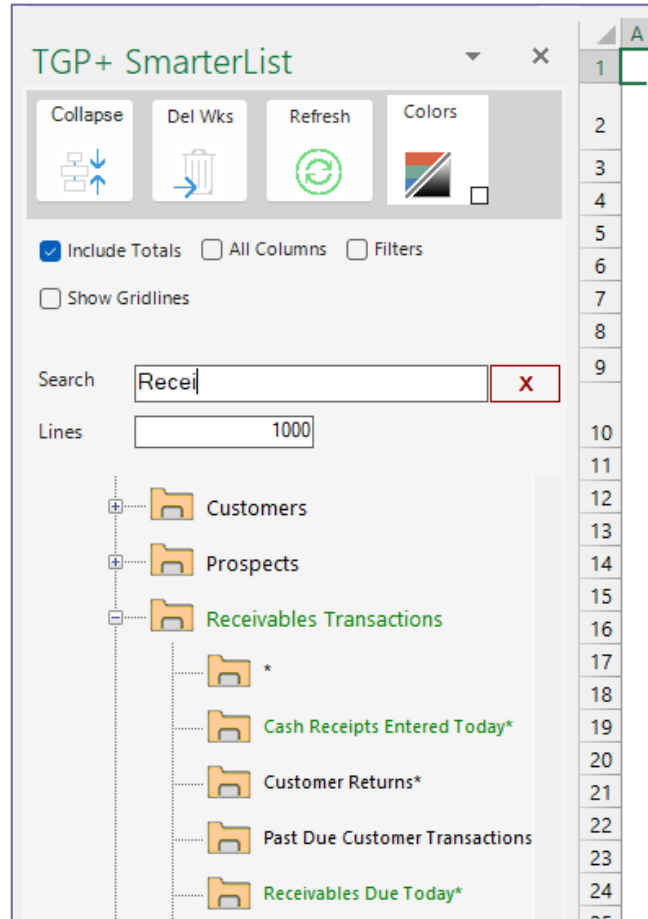
If you've used Dynamics GP before, you may be familiar with SmartList. TGP+'s SmarterList displays the same data users might find in SmartList, but loads it directly into Excel, and at a much faster speed.

Users will only have access to the parts of SmartList their login gives them clearance to see.



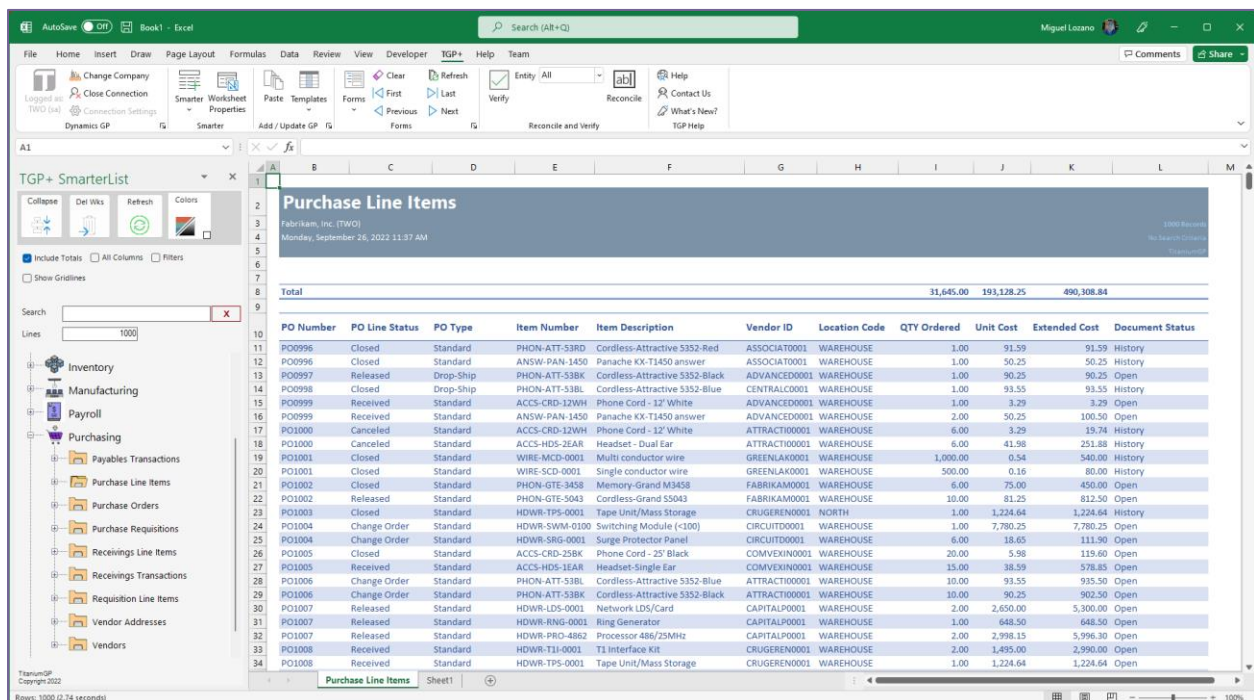
### Step 5

You can use TGP+ SmarterList's search bar to search for specific files in the lists. For example, some users like to create additional lists in their SmartList environment to organize data that is relevant to them. This functionality exists in SmarterList, but the search bar makes it easier to find lists more easily.



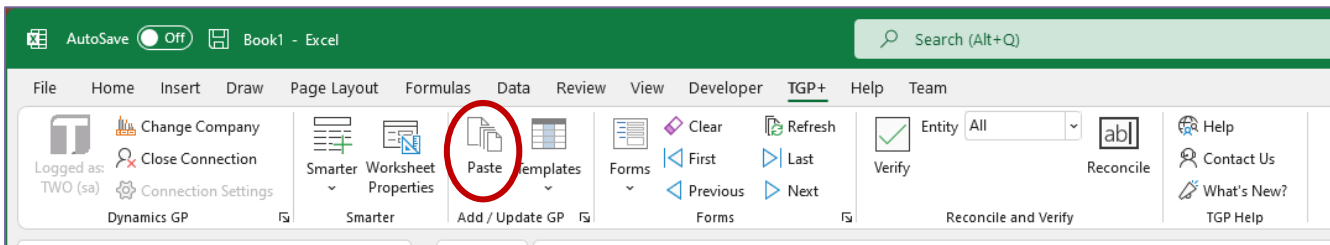
### Step 6

Clicking on one of the lists in TGP+ SmarterList will open it in Excel, and users can manipulate the information directly on that list.



### Step 7

Once you have made the necessary changes to your SmarterList, highlight the parts of the document you want to update, and click on Paste.



### Step 8

A bar will pop up on the right-hand side. This is the TGP+ Copy/Paste user interface. TGP+ will automatically analyze the SmarterList that you have open and try to identify the transaction type. In this case, under Transaction Type, you can see that TGP+ has correctly identified the document as showing **“Purchase Line Items”**. Always double-check this drop-down and select the correct option if TGP+ identifies an incorrect document type.

You’ll notice that the information you selected is highlighted in yellow, and displayed in a screenshot in the vertical scroll bar right below the transaction type drop-down. If everything looks correct, click on the green **“Process Paste”** button.

**Purchase Line Items**

Fabrikam, Inc. (TWO)  
Monday, September 26, 2022 11:37 AM

Total 31,645.00 193.1

PO Number	PO Line Status	PO Type	Item Number	Item Description	Vendor ID	Location Code	QTY Ordered	Unit C
PO0996	Closed	Standard	PHON-ATT-53RD	Cordless-Attractive 5352-Red	ASSOCIAT0001	WAREHOUSE	1.00	
PO0996	Closed	Standard	ANSW-PAN-1450	Panache KX-T1450 answer	ASSOCIAT0001	WAREHOUSE	1.00	
PO0997	Released	Drop-Ship	PHON-ATT-53BK	Cordless-Attractive 5352-Black	ADVANCED0001	WAREHOUSE	1.00	
PO0998	Closed	Drop-Ship	PHON-ATT-53BL	Cordless-Attractive 5352-Blue	CENTRALC0001	WAREHOUSE	1.00	
PO0999	Received	Standard	ACCS-CRD-12WH	Phone Cord - 12' White	ADVANCED0001	WAREHOUSE	1.00	
PO0999	Received	Standard	ANSW-PAN-1450	Panache KX-T1450 answer	ADVANCED0001	WAREHOUSE	2.00	
PO1000	Canceled	Standard	ACCS-CRD-12WH	Phone Cord - 12' White	ATTRACTI0001	WAREHOUSE	6.00	
PO1000	Canceled	Standard	ACCS-HDS-2EAR	Headset - Dual Ear	ATTRACTI0001	WAREHOUSE	6.00	
PO1001	Closed	Standard	WIRE-MCD-0001	Multi conductor wire	GREENLAK0001	WAREHOUSE	1,000.00	
PO1001	Closed	Standard	WIRE-SCD-0001	Single conductor wire	GREENLAK0001	WAREHOUSE	500.00	
PO1002	Closed	Standard	PHON-GTE-3458	Memory-Grand M3458	FABRIKAM0001	WAREHOUSE	6.00	
PO1002	Released	Standard	PHON-GTE-5043	Cordless-Grand 55043	FABRIKAM0001	WAREHOUSE	10.00	
PO1003	Closed	Standard	HDWR-TPS-0001	Tape Unit/Mass Storage	CRUGEREN0001	NORTH	1.00	1.4
PO1004	Change Order	Standard	HDWR-SWM-0100	Switching Module (<100)	CIRCUITD0001	WAREHOUSE	1.00	7.7
PO1004	Change Order	Standard	HDWR-SRG-0001	Surge Protector Panel	CIRCUITD0001	WAREHOUSE	6.00	
PO1005	Closed	Standard	ACCS-CRD-25BK	Phone Cord - 25' Black	COMVEXIN0001	WAREHOUSE	20.00	
PO1005	Received	Standard	ACCS-HDS-1EAR	Headset-Single Ear	COMVEXIN0001	WAREHOUSE	15.00	
PO1006	Change Order	Standard	PHON-ATT-53BL	Cordless-Attractive 5352-Blue	ATTRACTI0001	WAREHOUSE	10.00	
PO1006	Change Order	Standard	PHON-ATT-53BK	Cordless-Attractive 5352-Black	ATTRACTI0001	WAREHOUSE	10.00	
PO1007	Released	Standard	HDWR-LDS-0001	Network LDS/Card	CAPITALP0001	WAREHOUSE	2.00	2.6
PO1007	Released	Standard	HDWR-RNG-0001	Ring Generator	CAPITALP0001	WAREHOUSE	1.00	6
PO1007	Released	Standard	HDWR-PRO-4862	Processor 486/25MHz	CAPITALP0001	WAREHOUSE	2.00	2.5
PO1008	Received	Standard	HDWR-T11-0001	T1 Interface Kit	CRUGEREN0001	WAREHOUSE	2.00	1.4
PO1008	Received	Standard	HDWR-TPS-0001	Tape Unit/Mass Storage	CRUGEREN0001	WAREHOUSE	1.00	1.4

**TGP+ Copy/Paste**

Transaction Type  
Purchase Line Items

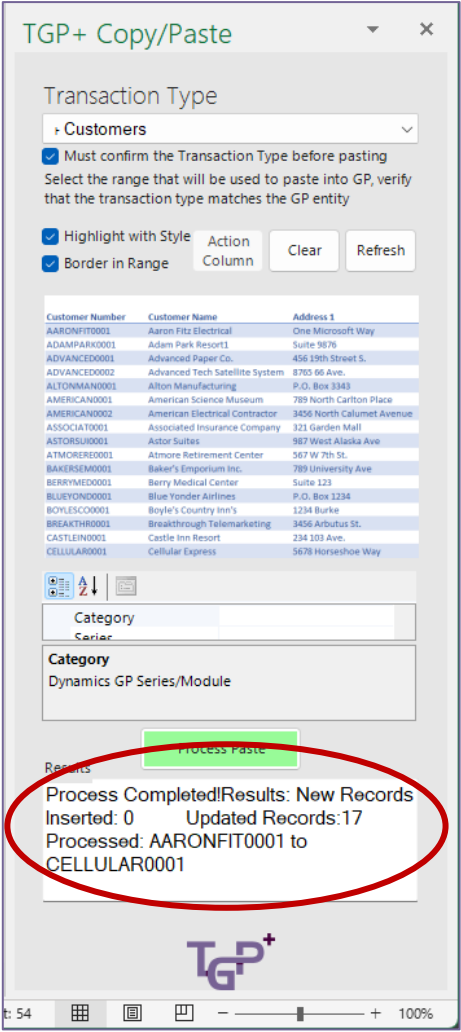
Must confirm the Transaction Type before pasting  
Select the range that will be used to paste into GP, verify that the transaction type matches the GP entity

Highlight with Style    Action    Clear    Refresh

Border in Range    Column

Category  
Series  
Dynamics GP Series/Module

Results  
**Process Paste**



Step 9

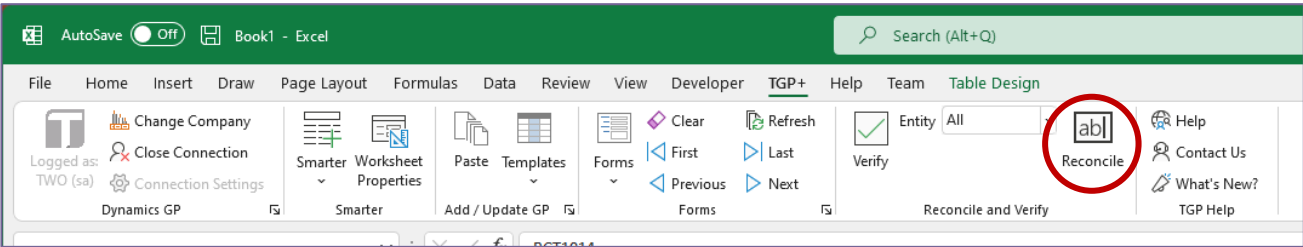
When the paste operation is successfully completed, you will receive a message in the “Results” section of the vertical scroll bar.

And that’s it!

Your GP SmartList has been updated.

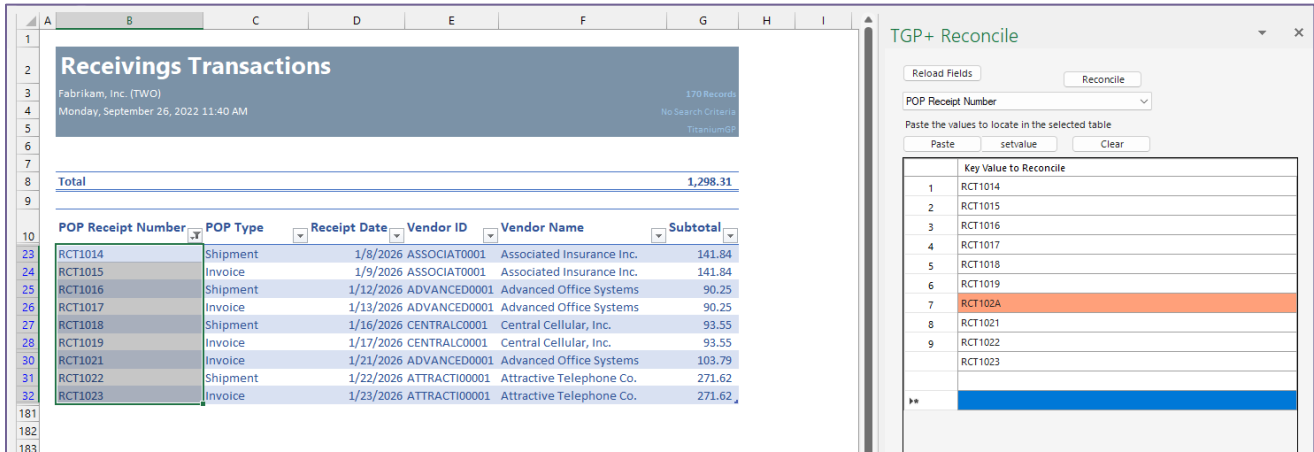
Step 10

Now, let’s look at some of the other TGP+ features. Open another SmarterList and click on “Reconcile” in the ribbon. This is TGP+’s Reconciliation tool. It will open in a vertical scroll bar on the far right side of the screen.



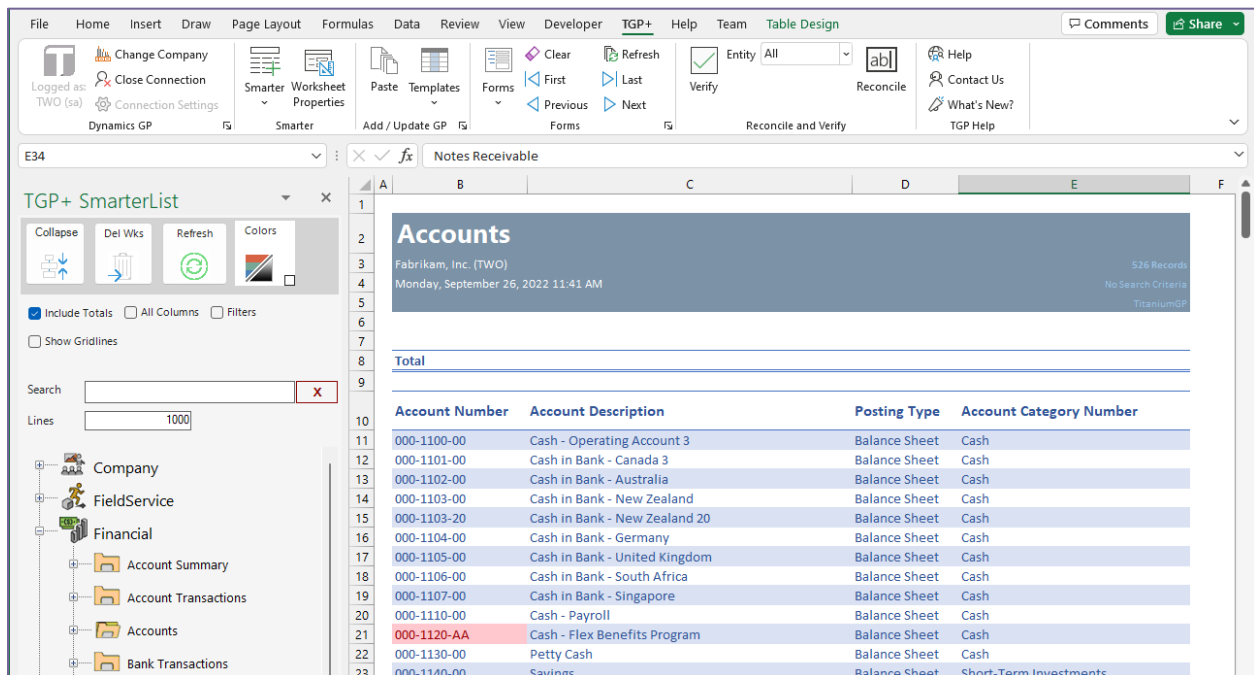
### Step 11

Copy the data from the SmarterList that you would like to reconcile. Paste it into the table in the vertical scroll bar. In the drop-down, select the field type that you would like to reconcile, and then click on **“Reconcile”**. Any fields that are not found will be highlighted in orange.



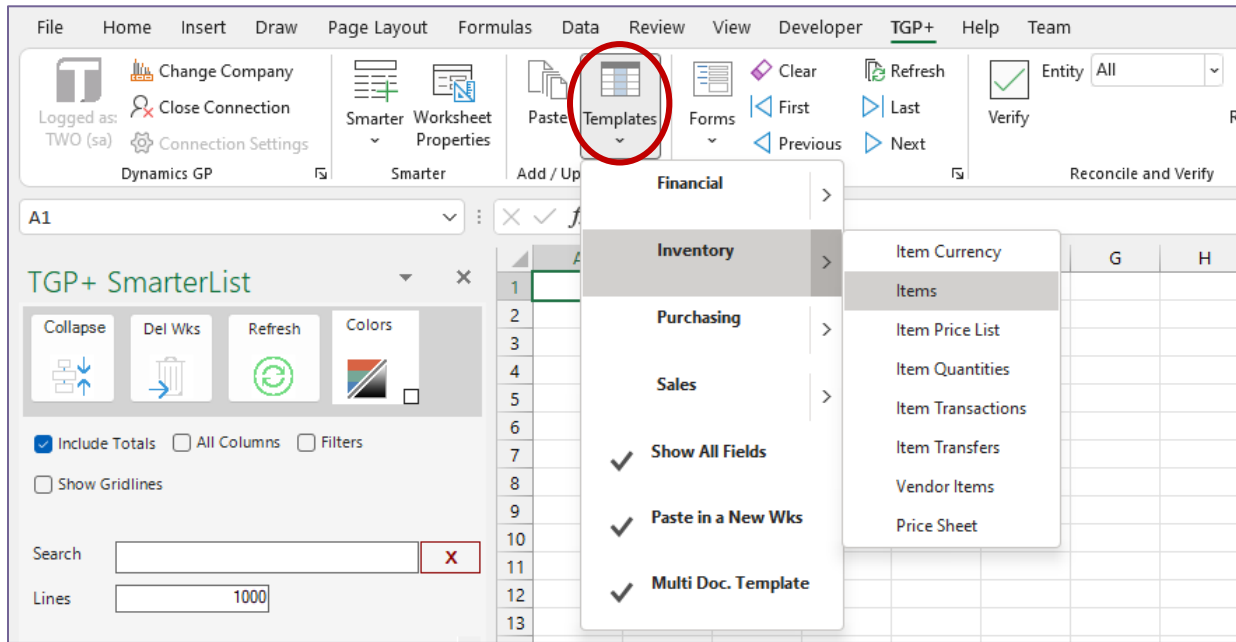
### Step 12

Now let’s take a look at the **“Verify”** feature. This feature only works for **Master Data**. Let’s open a Master Data SmarterList. Click on Verify. Any accounts that are not found will be highlighted in red.



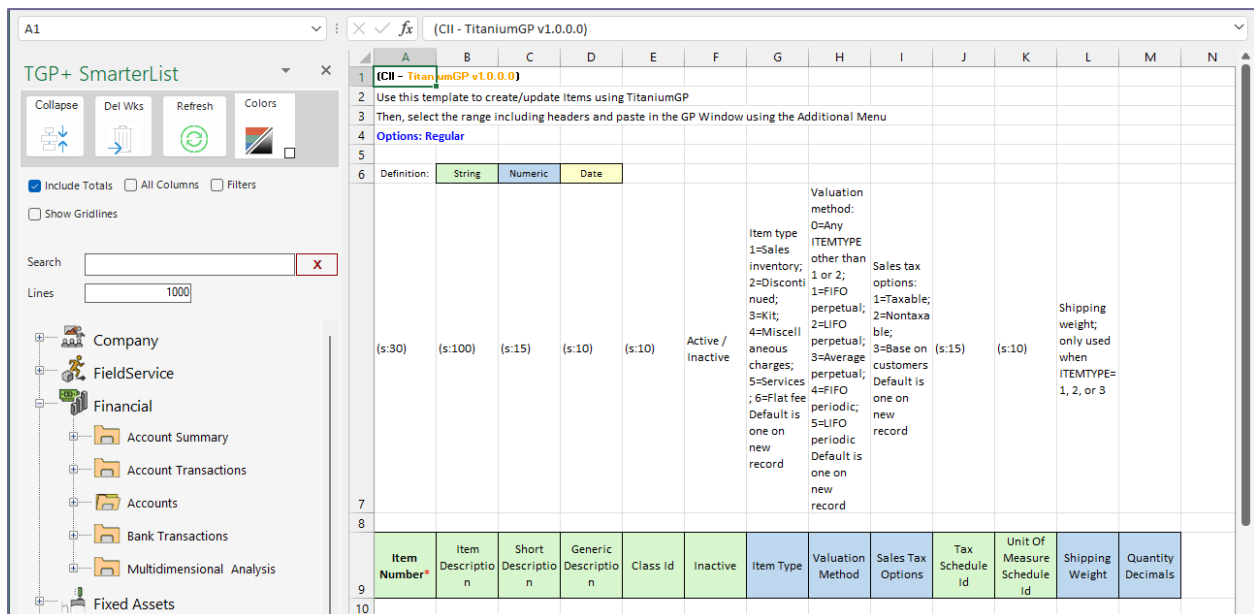
### Step 13

Now let's take a look at our built-in templates. If you've already used TGP Copy/Paste, you may find the templates to be familiar. Clicking on "Templates" in the ribbon will open a drop-down menu with existing editable templates.



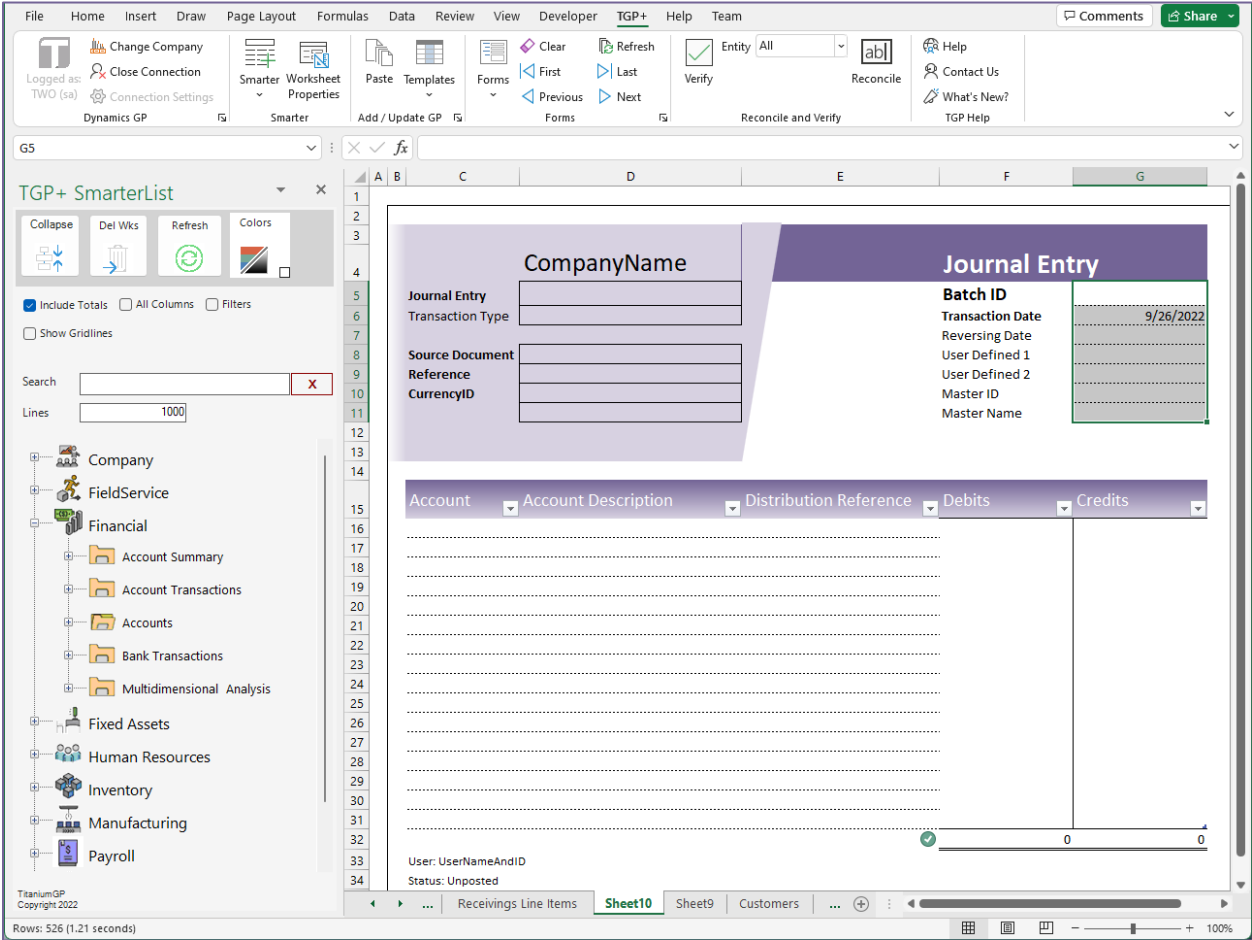
### Step 14

Click on the template you would like to open. All of our templates can be easily populated and used to update GP data. They include instructions above each row.



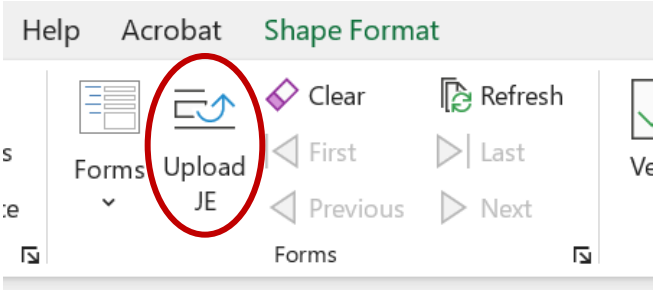
### Step 15

The other tool that users might find to be very useful is the **Forms** tool. Here, users will find templates for GP forms that they can fill out and use to update GP data. More forms will be available in future versions of TGP+.



### Step 16

To upload your form, click **“Upload JE”**. If you would like to edit your form or a previously made form, it must be done in Dynamics GP.

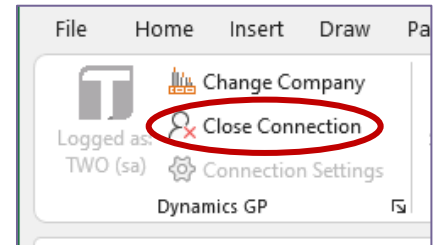


## Step 17

Once you're done using TGP+, you can log out by clicking on **"Close Connection"** in the ribbon. Users are also able to change the company they are working in by clicking on **"Change Company"**.

Congratulations!

You're ready to start using TGP+!





TITANIUMGP



## Office

1041 Market St., Suite #174

San Diego, CA 92101



## Hours

M-F: 8am - 5pm (PST)

S-S: Closed



## Contact Us

[info@TitaniumGP.com](mailto:info@TitaniumGP.com)

+1 855.238.8739

TGP+