

ASSIGN THE NEXT ID

TGP NextID Manual

TitaniumGP® NextID User Manual Version 2.3

Microsoft
Partner

Contents

How can NextID help my business? 3

Setting up NextID..... 4

How to Use NextID..... 6

How can NextID help my business?

NextID is a handy tool that can be used to create standardized strings for customer, employee, vendor, prospect, and item identifications.

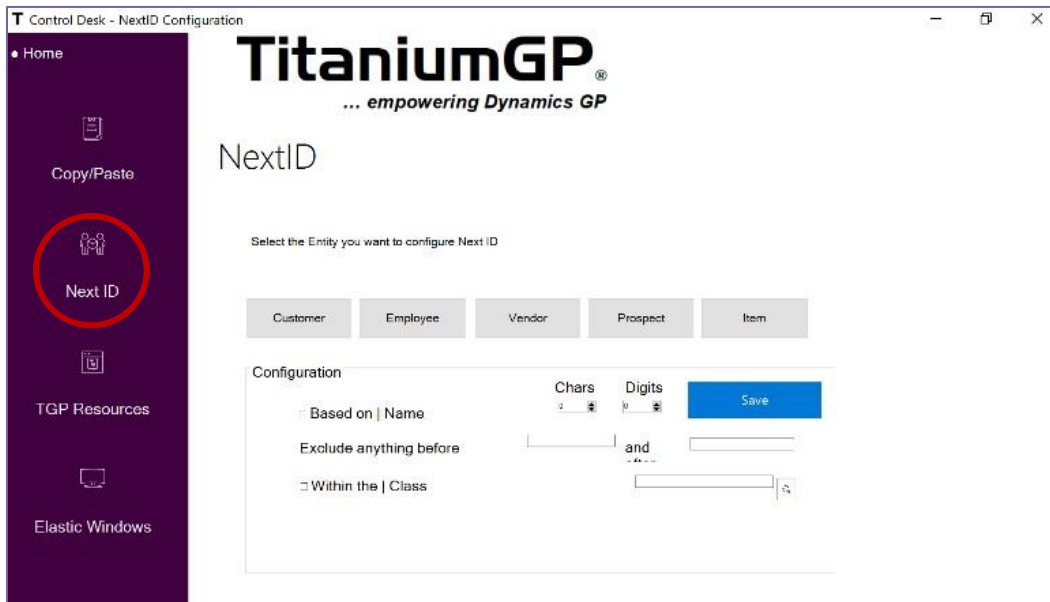
GP users start by defining the rules they want their NextID to follow. By establishing the number of characters and digits that IDs should have, users can create consistent new IDs.

NextID creates new IDs starting from the next alphanumeric ID in the ID pattern established. NextID can also be set up to begin creating IDs after a specified string.

Setting up NextID

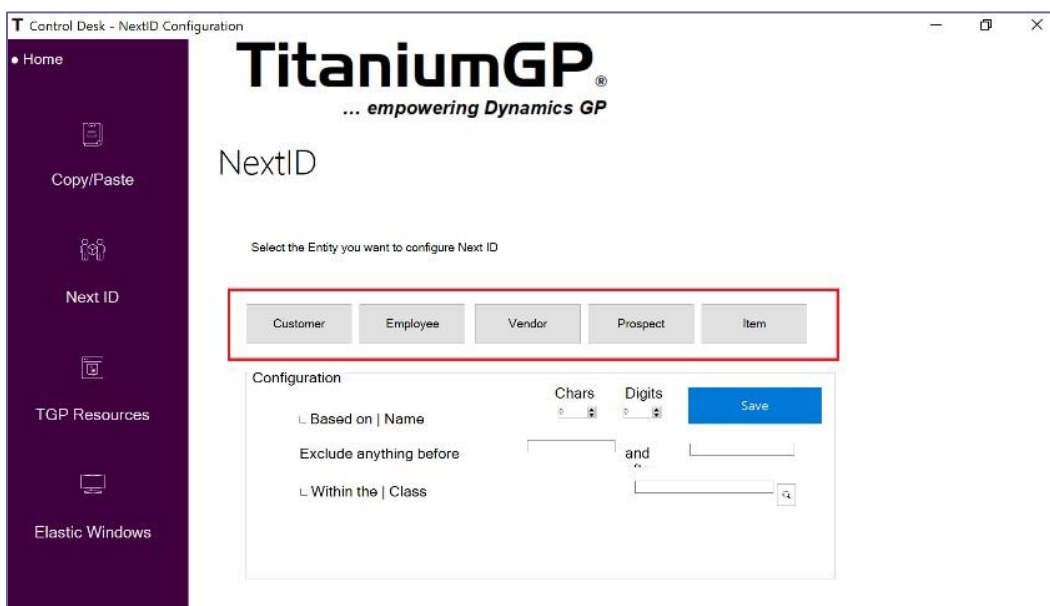
Step 1

Open up the NextID interface window by going to the TitaniumGP control desk. Click on **“Features”** in the bar on the left-hand side, and then click on **“NextID”**. You will see the following screen:



Step 2

Towards the middle of the screen, you will see options allowing you to pick what you want to create an ID for. Select from one of the boxes.



Step 3

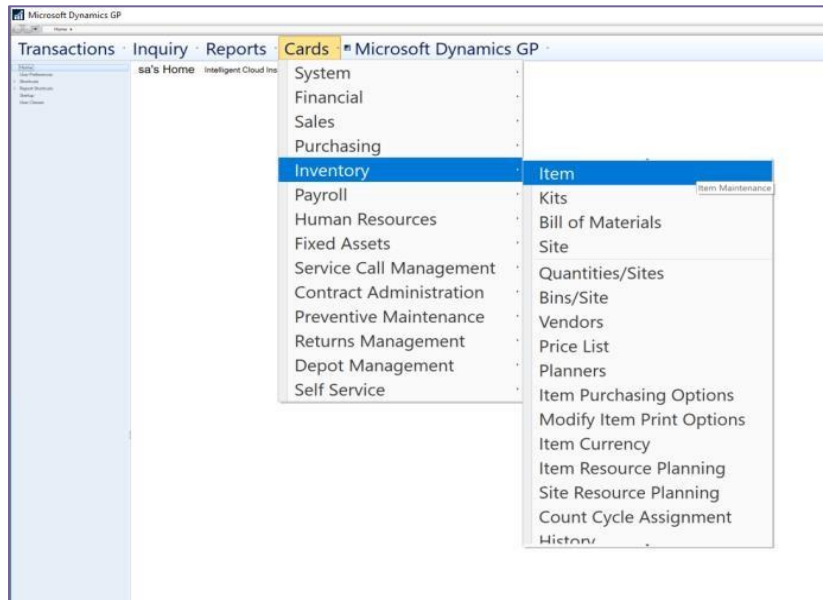
Select how many characters and digits you would like your IDs to have. This allows for consistency in every single ID created by NextID. As these IDs are created, they will automatically be saved, allowing for fast recognition of these variables the next time information pertaining to them is input. The “exclude anything before” fields can be used to establish an ID pattern continuing where the last one ended.

The screenshot shows the 'Control Desk - NextID Configuration' window. The interface features a dark purple sidebar on the left with navigation options: Home, Copy/Paste, Next ID, TGP Resources, and Elastic Windows. The main content area displays the TitaniumGP logo and the text 'NextID'. Below this, there is a section titled 'Select the Entity you want to configure Next ID' with five buttons: Customer, Employee, Vendor, Prospect, and Item. Underneath, the 'Configuration' section includes a checkbox for 'Based on | Name', a 'Save' button, and two spinners labeled 'Chars' and 'Digits' which are highlighted with a red box. Below the spinners are fields for 'Exclude anything before' and 'Within the | Class'.

How to Use NextID

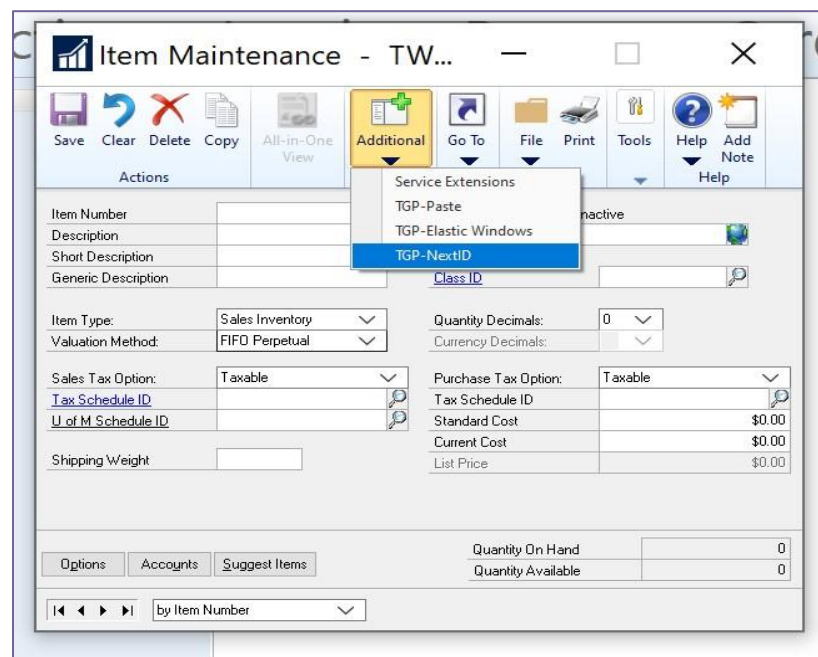
Step 1

Open Dynamics GP as you normally would and go to Item Maintenance to create a new Item ID.



Step 2

Go to the Additional tab, and then click on “TGP-NextID”. This will allow you to create new IDs within Dynamics GP.



Step 3

The NextID window will show up within GP. The configuration will match the settings you previously applied in TitaniumGP. Now, simply type in the name of the item you wish to create. Click on **“Generate ID”**. The field to the right of the Next Item ID will now be populated with your NextID. Click on **“Insert”** for the NextID created to be inserted back into Dynamics GP.

The screenshot shows the 'Next Item ID...' dialog box. The 'Last Item Added' field contains '5-TEARDOWN'. The 'Next Item ID' field is empty. The 'Name to Process' field is highlighted with a red box. The 'Configuration' section has 'Based on Item Name' checked, 'Chars' set to 3, and 'Digits' set to 3. The 'Similar Names' section is empty.

Congratulations! You just created your first Item ID using TitaniumGP.

To create a new ID for a customer, employee, vendor, or prospect: simply follow the same steps as for Item ID but in its respective window.



TITANIUMGP



Office

1041 Market St., Suite #174

San Diego, CA 92101



Hours

M-F: 8am - 5pm (PST)

S-S: Closed



Contact Us

info@TitaniumGP.com

+1 855.238.8739