

FLEXIBLE CUSTOMIZABLE DYNAMICS GP WINDOWS

TGP Elastic Windows Manual

TitaniumGP® Elastic Windows User Manual Version 2.3

Microsoft
Partner

Contents

What is an Elastic Window? 3

What is the Elastic Designer? 3

How can Elastic Windows and Designer help my business? 4

How to Create an Elastic Window 5

Using your Newly Created Elastic Window 9

What is an Elastic Window?

Elastic Windows are expansions of Dynamics GP windows. You can add fields and business rules directly into this window to make the possible functionality of a Dynamics GP window endless. Since they are attached directly to the associated GP Window, they allow GP users to keep all their information stored in their Dynamics GP database.

What is the Elastic Designer?

Elastic Designer is a program that can be used to create and modify Elastic Windows. Users can make their own designs that are custom fit to their company's needs. Our Elastic Windows Library has some commonly used pre-made templates, but users can easily design their own Elastic Window from scratch.

Our Elastic Designer gives users the ability to add a variety of new fields. The supported field types are:

- TextBoxes
- Pictures
- Labels
- Numeric fields
- CheckBoxes
- Date fields
- Comments boxes
- Grids
- LookUp fields
- Gridview/Treeview for displaying data in a grid or tree format
- ComboBoxes for a dropdown of different text types
- File attachments

How can Elastic Windows and Designer help my business?

Elastic Designer's ability to create Elastic Windows makes it a great asset for GP users. Elastic Windows add an incredible amount of functionality to GP windows, and users can have a different Elastic Window attached to each GP card.

With this amount of flexibility, it's a great tool for companies looking to expand the amount and type of data they can store in GP. Here are some of the amazing ways our customers have used Elastic Windows and Designer:

Add another data level to your company's Inventory Module.

Elastic Designer can be used to create custom Elastic Windows. One of the places where this can be very useful is in the Inventory Module. Users can add custom fields that allow for more detailed inventory item information. For example, users can add spaces for inventory item colors, material types, and even comments. The comments field is a great space for recording additional information that might not fit into a specific field.

Add checks to Purchasing Receiving Transactions.

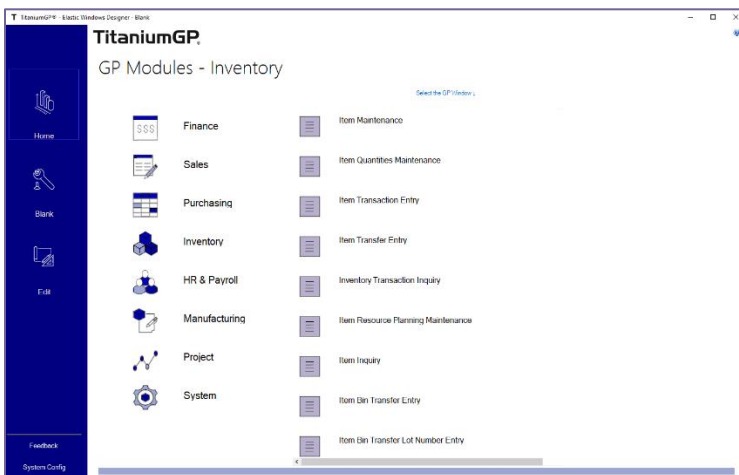
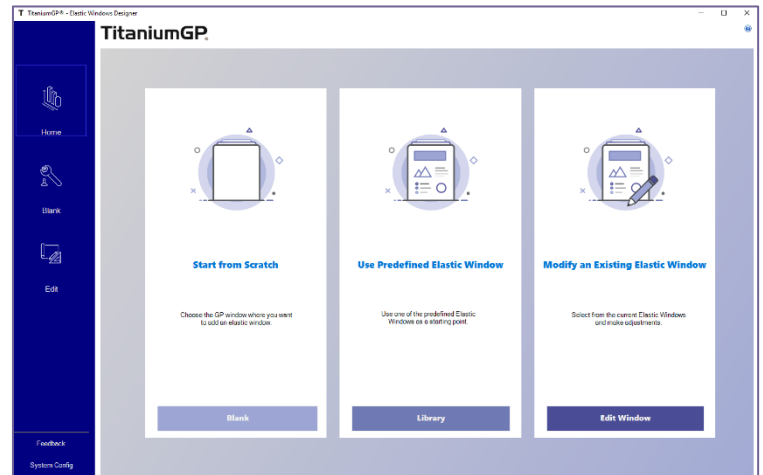
When an item is delivered, employees might need to perform additional checks on the item, especially when dealing with sensitive materials. For example, items might need to be delivered at a certain temperature or delivered with the right certification. Special fields can be added to Elastic Windows containing checkboxes with things to verify before a Purchasing Receiving Transaction can be posted. You can even add a field for file uploads where employees can upload the item certificates.

These are just some of the ways that Elastic Windows and Designer can be used to help your business. Since Elastic Windows are fully customizable, the potential for improving a company's workflow is limitless.

How to Create an Elastic Window

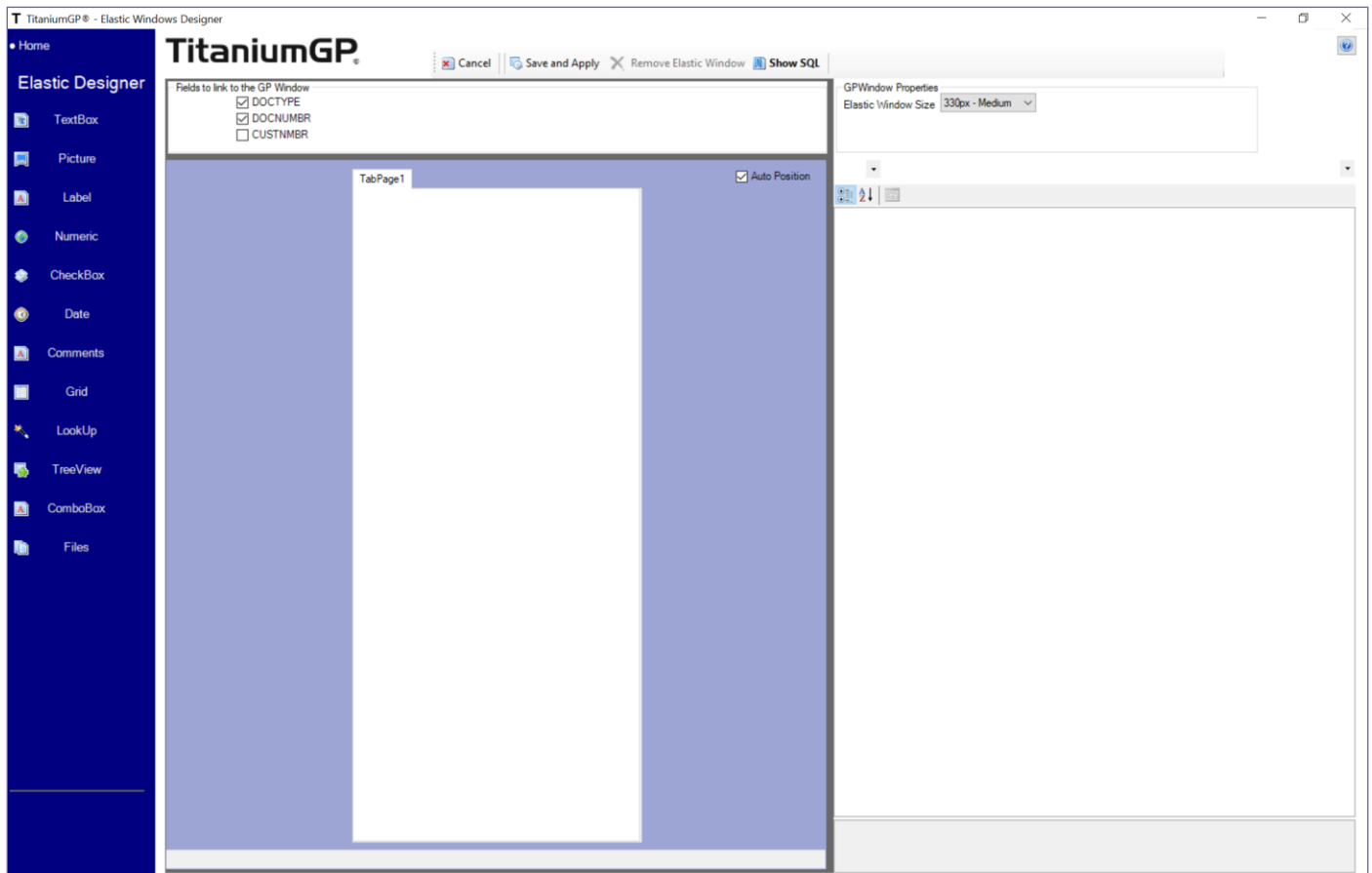
Step 1

Elastic Windows can be created in the Elastic Designer that is under the Tools section of the Control Desk. New windows can be created here and existing ones can be modified. Once open, the designer will give you this view:



Step 2

Here, users can select what table in the database they would like their new Elastic Window to be attached to. Click on the table you'd like to be brought into the editing mode of designer.



The Designer Library has templates users can customize to their own needs. Users can also use a blank template to start designing from scratch.

Shown above is a blank template. You can populate the Elastic Window using the fields in the left sidebar, also known as the Fields Window. Simply click on them or drag them onto the Preview Window in the middle of the screen. This will insert them in the Elastic Window.

If a field is selected in the Preview Window, several settings will show on the right panel, known as the Window Properties. These allow the user to customize what the selected field will show.

In the image below we have the TextBox selected:

The screenshot displays the TitaniumGP Designer interface. On the left, a design canvas shows a 'TabPage1' containing several controls: 'Label01', 'TextBox01' (selected), 'Pic01', and 'NumBox01'. The 'TextBox01' control is highlighted with a dashed border. On the right, the 'GPWindow Properties' window is open, showing the 'Data Settings' and 'Global Settings' for the selected control. The 'Data Settings' section includes fields for 'DataType' (Varchar), 'Default Value' (empty), 'FieldName' (TextBox01), 'MaxLength' (55), 'MiddlePoint' (0), and 'SQL Script' (empty). The 'Global Settings' section includes 'Casing' (Normal), 'ControlName' (advCtrl0001), 'ControlType' (empty), 'DisplayOnly' (False), 'Location' (1, 40), 'Size' (286, 25), and 'ToolTip' (empty). The 'Misc' section includes 'RegEx' (empty). The 'Version' section includes 'TGPVersion' (2.6). The 'ControlName' field is also visible at the bottom of the Properties window.

Data Settings	
DataType	Varchar
Default Value	
FieldName	TextBox01
MaxLength	55
MiddlePoint	0
SQL Script	

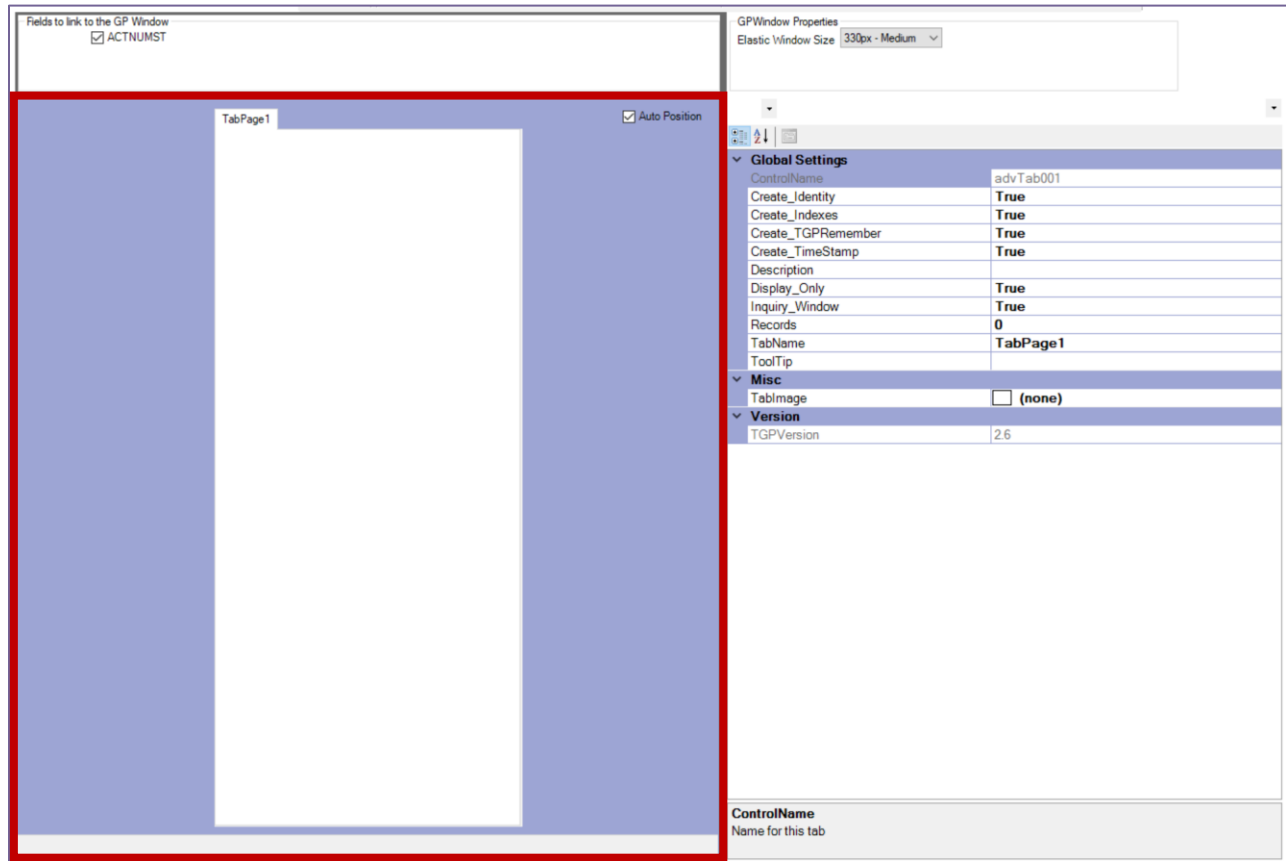
Global Settings	
Casing	Normal
ControlName	advCtrl0001
ControlType	
DisplayOnly	False
Location	1, 40
Size	286, 25
ToolTip	

Misc	
RegEx	

Version	
TGPVersion	2.6

In the Window Properties, we can change features of this field, including the position on the window, the type of data stored, and the default value in the field.

In the image below we have the background of the Preview Window selected:



The Window Properties is populated with Global Settings. The most important is ControlName, which is how it will appear in the database, as well as TabName, which can be used to rename the Elastic Window. Above these settings is a dropdown to select an icon as well as one to resize the Elastic Window.



To save your Elastic Window, click **“Save and Apply”**.

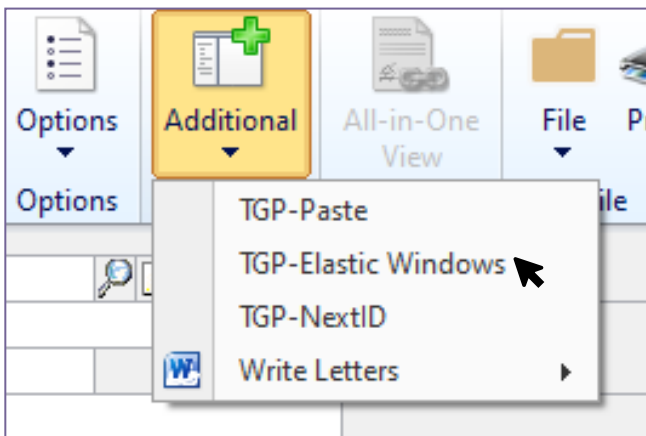
Using your Newly Created Elastic Window

Once Elastic Windows are created in Elastic Designer, the user can access the window in the GP field they wish to by taking the following steps:

Step 1

Open the Dynamics GP card you want to utilize Elastic Windows in.

The screenshot shows the Dynamics GP Vendor form. The ribbon at the top includes 'Actions' (Save, Clear, Delete, Write Letters), 'Options' (Options), 'Additional' (Additional), 'All-in-One View' (All-in-One View), 'File' (File, Print, Tools), and 'Help' (Help, Add Note, Help). The form fields include: Vendor ID (with Hold checkbox), Name, Short Name, Check Name, Status (Active), Class ID, Primary Address (with Address ID link), Contact, Address, City, State, ZIP Code, Country Code, Country, Phone 1-3, Fax, Tax Schedule, Shipping Method, UPS Zone, Vendor Account, Comment 1, Comment 2, and Address IDs (Purchase, Remit To, Ship From, 1099). Navigation buttons (Options, Address, Accounts, E-mail) and a search dropdown (by Vendor ID) are at the bottom.

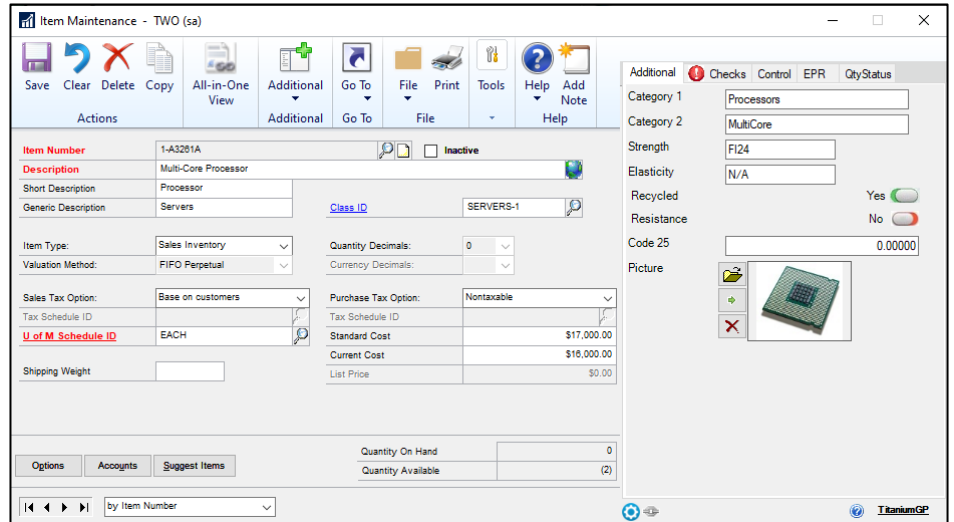


Step 2

Click the “**Additional**” drop-down menu in the ribbon and click “**TGP-Elastic Windows**”. You can also use the keyboard shortcut **Ctrl-E**.

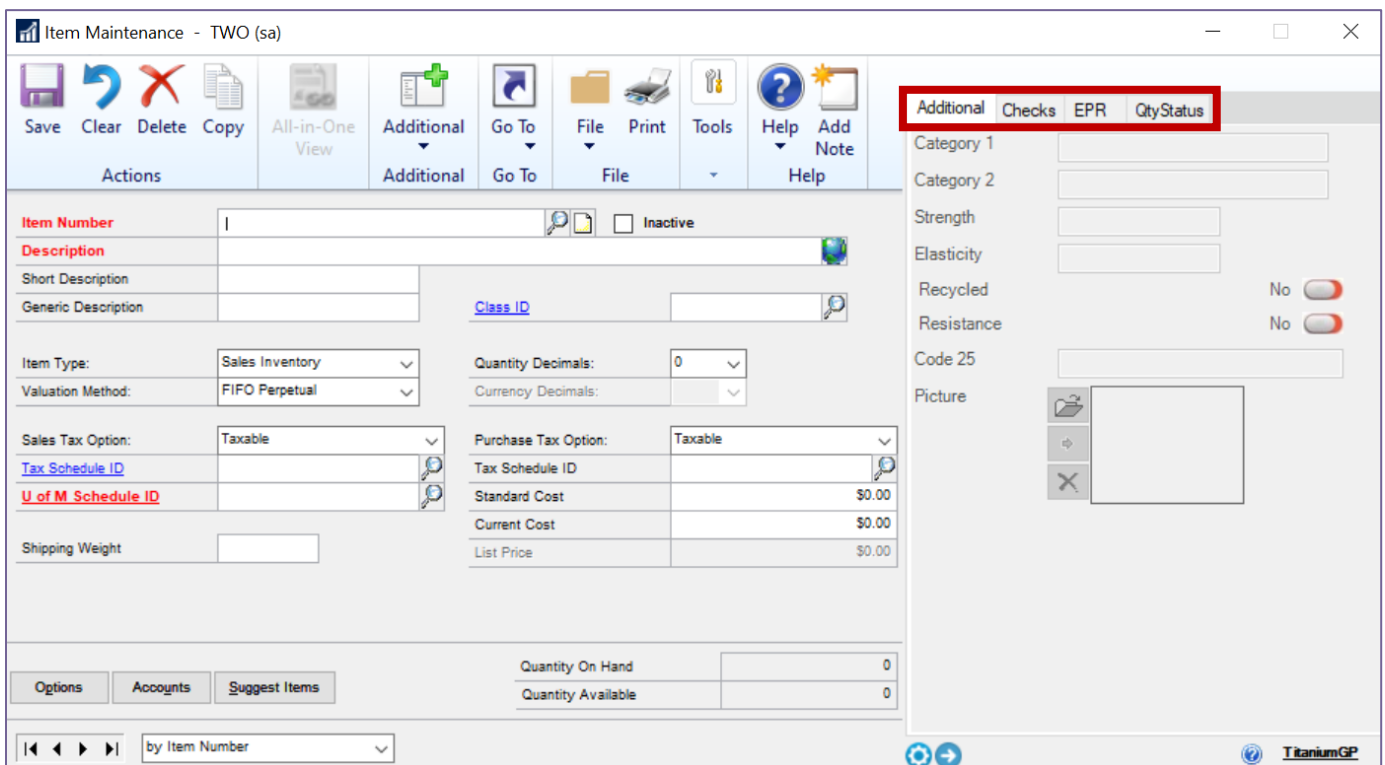
Step 3

The Elastic Window will show up on the side of the GP window.



Step 4

If multiple Elastic Windows are assigned to the same GP window they will show up as tabs. Users can click through these tabs to view each one.



And that's it! You are ready to start designing your own Elastic Windows.



TITANIUMGP



Office

1041 Market St., Suite #174

San Diego, CA 92101



Hours

M-F: 8am - 5pm (PST)

S-S: Closed



Contact Us

info@TitaniumGP.com

+1 855.238.8739